

From: Graham Gibbens, Cabinet Member for Adult Social Care and Public Health
Meradin Peachey, Kent Director of Public Health

To: Kent Health and Wellbeing Board

Subject: Addressing Health Inequalities in Kent

Classification: Unrestricted

Summary

The purpose of this report is to identify geographical areas where Clinical Commissioning Groups (CCGs) and the other local partners can focus their attention for effectively reducing health inequalities, by reducing disease and gender specific under 75 mortality.

Based on the model suggested by Professor Chris Bentley the Kent Public Health department has developed a methodology to identify the number of lives that will need to be saved for effective reduction in health inequalities and where to target resources.

This paper states the number of deaths that will need to be reduced in areas that have mortality rates within the top 20% of death rates for each CCG to achieve average number of deaths across Kent and Medway.

Recommendation(s): The Health and Wellbeing Board are asked to:

- i) Note the data reported in this paper
- ii) Support CCGs and NHS England to develop action plans to address the identified number of postponed premature deaths targeting the areas with top 20% death rate.
- iii) Support the local system in working together through the local Health and Wellbeing Boards. Action planning at a local level to develop local 'Mind the Gap' needs to continue and bring together the District Council and CCG priorities to tackle health inequalities. This should be used as the mechanism to identify contribution from various parts of the system (CCGs, District Councils, KCC, Health Watch and voluntary sector) and address the wider determinants of health, health promotion and preventing poor health.

1. Introduction

Professor Chris Bentley was invited to present his approach to 'Addressing Health Inequalities' at the November 2012 Shadow Health and Wellbeing Board, where he presented a number of tools for assessing variation that contributes to the health inequalities gap. This paper builds on the model developed by Chris Bentley to show CCGs the specific groups of adults most at risk of early deaths. The public health intelligence team have used small areas of geography (Lower level super output areas LSOAs) to help CCGs understand where the avoidable variations are.

Health inequalities are avoidable variations in health status of groups and individuals and are a complex issue. There is evidence that populations in areas with high deprivation experience higher morbidity and mortality than those areas with low deprivation (Marmot strategic review, 2010), however some less deprived areas may contain pockets of high mortality.

By using Lower Super Output Areas high risk communities can be identified in affluent and deprived parts of Kent.

This report presents patterns of premature mortality (under 75) in the Lower Super Output Areas (LSOAs) which contain the highest mortality rates. It further addresses this issue by showing how many lives can be saved if death levels within this top quintile (containing 20% of the population) are reduced to the average level for Kent and Medway at this time (2010-12).

This paper shows one aspect of the inequalities plan where CCGs can help to make a difference.

2. How is “Mind the Gap” being used?

‘Mind the Gap, Building bridges to better health for all’ is a cross system approved Health Inequalities action plan providing strategic direction, and was produced by KCC in collaboration with District Councils. The action plan is based on the principles of Marmot’s life-course approach and has been aligned to the Joint Strategic Needs Assessment (JSNA) priorities and relevant policies and plans.

Kent Public Health team is supporting the Districts in their preparation of local action plans for their contribution to reducing health inequalities. The district level action plans so far have had variable collaboration with CCGs as at the time CCGs were being established.

Professor Chris Bentley has visited a number of Kent Local Authorities and CCGs and endorses the partnership approach of CCGs, Districts and the County Council working together to tackle health inequalities. The plan therefore illustrates a range of actions and initiatives undertaken by Kent County Council (KCC) and partners to address the wider social determinants of health inequalities across Kent. It demonstrates a far-reaching and expansive contribution that District Councils, community enterprises, voluntary sector and other statutory agencies make to improve healthy lifestyles and promote mental and emotional wellbeing among the Kent population, particularly in deprived communities and to the most vulnerable in society.

In addition, the Joint Policy and Planning Board for Housing and Tobacco Control services are finalising separate action plans related to ‘Mind the Gap’ focussing on Housing and Tobacco Control respectively. The Housing action plan will identify activities that address housing issues that impact upon inequalities (such as decent home standard, homelessness, supporting people to live in their own homes) and Tobacco Control action plan will focus on actions to reduce smoking prevalence in manual and routine workers, smoking in pregnancy and the illicit tobacco trade.

3. How will we know if commissioned services will reduce health inequalities?

To measure effectiveness of action plans these are supported by an Impact Assessment tool designed on a model endorsed by the Department of Health. The tool includes the 13-step approach to the Health Inequalities National Support Team’s (HINST) Christmas Tree model for commissioning for the most effective outcomes for inequalities. The tool will be used to assess the impact of the proposed service on health inequalities. In the first phase this tool is being rolled out to all Health Inequalities leads across directorates in Kent County Council and to HI leads in District Councils. The second phase of the roll out will include CCGs.

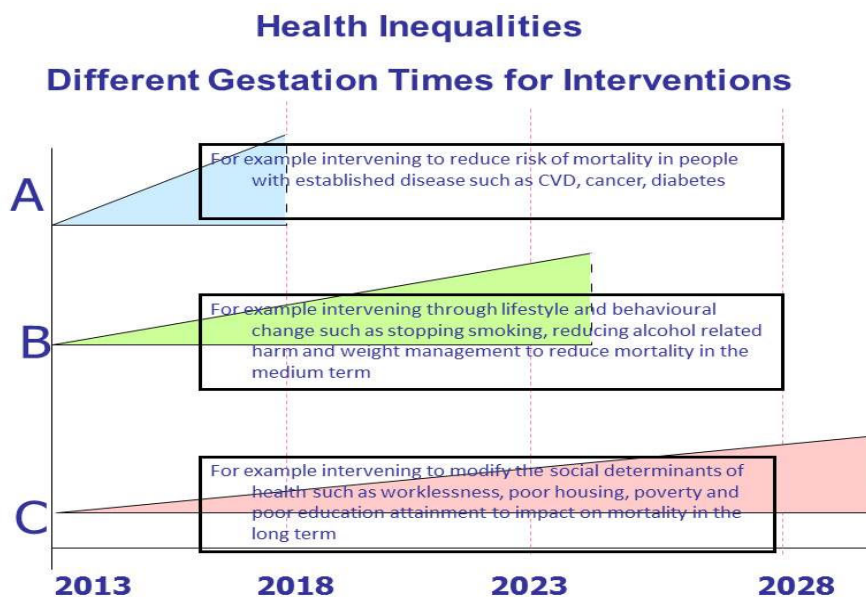
4. Contribution from CCGs and NHS England (Kent and Medway)

The local level Health and Wellbeing Boards provide opportunities for CCGs and District Councils to work collaboratively to reduce health inequalities. Figure A illustrates the role and contribution needed across the entire system, to ensure that health inequalities are effectively reduced over the short, medium and long - term.

All partners in the local health and care system have a role to play in prevention of ill health. The Area Team and CCGs are collectively responsible for commissioning services provided through general practice that can make a difference to the early deaths in the 'at risk' groups. Therefore this paper focuses on the short term interventions which can be influenced primarily by the CCGs and assist in reducing health inequalities. Examples of these services include:

- Reduce differences across practices in Kent on how patients with high blood pressure are effectively identified on a register and managed
- Reduce differences across practices in the number of patients that are known to have diseases compared to those who are expected to have a disease for certain conditions such as diabetes, blood pressure and respiratory diseases (Chronic Obstructive Pulmonary Disease)
- Maximise access to, and use of treatment, for managing clinical conditions such as high blood cholesterol, high blood sugar in the case of known diabetics.
- CCGs and NHSE have a particular role in relation to number A in figure A below.

Figure A:



5. Identifying target areas for intervention

This paper highlights areas at a small geographical level (lower level super output areas) that experience high rate of deaths for premature deaths (those under 75 yrs) related to:

- circulatory diseases
- respiratory diseases
- cancer

The data analysis highlights that disease specific deaths in under 75 years is higher among males and therefore this briefing paper has information relating to men. Data on premature deaths in females is available in specific reports for the CCGs at electoral ward and LSOA level (Appendices 1-7).

5.1 How did we identify number of lives that can be saved?

To develop a Kent wide picture premature mortality rates (deaths under 75 years) for Kent and Medway population were divided into equal tenths referred to as deciles, with decile 1 (top 10%) representing the highest premature mortality rates.

Premature mortality rates were calculated for small areas of geography (lower level super output areas), for each of the seven CCGs these death rates were ranked from highest to lowest and allocated to deciles.

The top two deciles (20%) of the population in each CCG, and the premature mortality rates for Kent and Medway were compared to identify the number of deaths that would need to be postponed if the mortality rate in the districts followed the same pattern as that for Kent and Medway. These calculations identify that the following numbers of lives would need to be saved.

- circulatory disease –515 lives saved (deaths postponed)
- respiratory disease –306 lives saved (deaths postponed)
- cancer –579 lives saved (deaths postponed)

5.1.1 Circulatory disease related under 75 mortality rates in men

Table 1 highlights number of circulatory related deaths among top 20% of the male population during 2010-2012 compared to death rate across Kent and Medway. **It shows that the death rate in top 20% of the population is nearly twice as high compared to Kent and Medway (189.3 and 83.6 per 100,000 respectively).** The table also highlights that that 20% of the CCG male population in these subsets (top LSOA) experiences 39% of all premature deaths from circulatory diseases (932 out of 2382).

Table 1: Mortality in 20% of population with highest death rates, all circulatory disease, aged under 75, 2010-2012, males, lower super output areas.

Mortality data for all circulatory diseases, aged under 75, 2010-2012 (pooled), males

Clinical commissioning group	Mortality in 20% of population experiencing highest death rates					
	Numbers of deaths in 2010-2012	Directly age-standardised mortality per 100,000	Numbers of deaths in 2010-2012	Directly age-standardised mortality per 100,000	Numbers of deaths which would occur if area experienced same mortality rates as K&M	Numbers of lives which could be saved in highest 2 deciles
NHS Ashford CCG	59	174.8	174	87.9	28	31
NHS Canterbury and Coastal CCG	59	195.2	231	68.3	25	34
NHS Dartford, Gravesham and Swanley CCG	149	191.6	338	86.9	65	84
NHS Medway CCG	150	189.1	359	89.9	66	84
NHS South Kent Coast CCG	139	186.3	349	96.5	62	77
NHS Swale CCG	84	171.1	159	89.5	41	43
NHS Thanet CCG	135	215.0	258	110.8	53	82
NHS West Kent CCG	148	186.6	514	68.7	66	82
Kent & Medway	923	189.3	2382	83.6	408	515

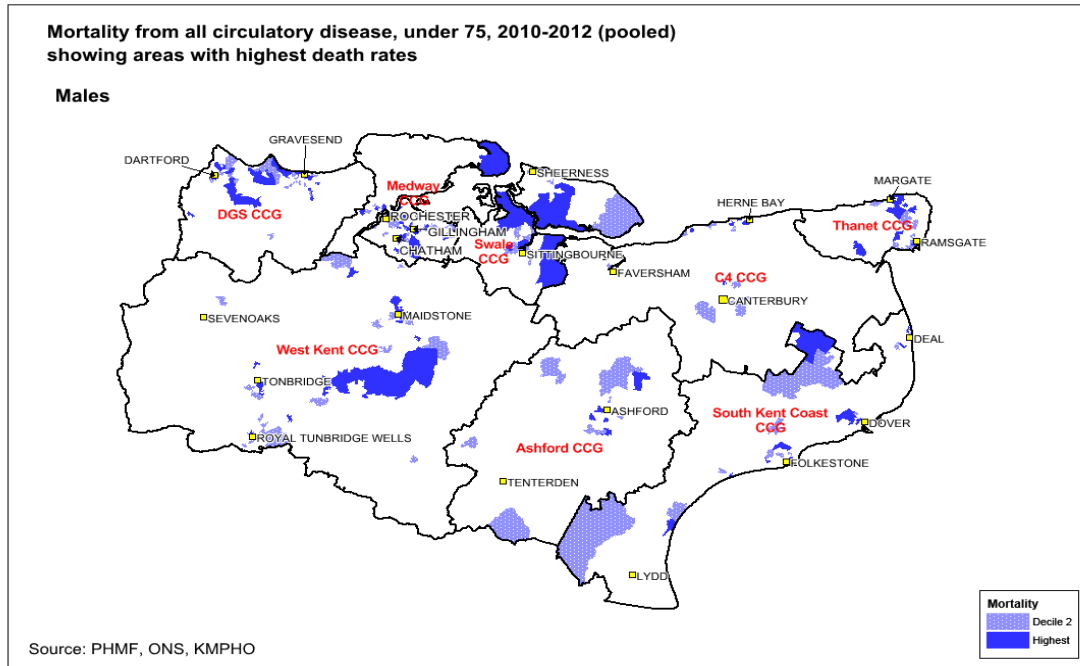
Source: PHMF, ONS, KMPHO

Note: Errors due to rounding may be evident

If each CCG were to aim for reducing their respective death rates in these areas to the same level as Kent and Medway then this would mean a reduction of 515 premature deaths across Kent and Medway in a three- year period.

Figure 1 highlights the geographical distribution in each CCG with premature male deaths experienced in the 20% of the population which have the highest mortality rates related to circulatory disease in Kent and Medway.

Figure 1: Mortality in 20% of population with highest death rates, all circulatory disease, aged under 75, 2010-2012, males, lower super output areas



5.1.2 Respiratory disease related under 75 mortality rates in men

Table 2 highlights number of respiratory disease related deaths among top 20% of the male population during 2010-2012 compared to death rate across Kent and Medway. **It shows that the death rate in top 20% of the population is nearly three times higher compared to Kent and Medway (84.4 and 27.3 per 100,000 respectively).** The table also highlights that that 20% of the CCG male population in these subsets (top LSOA) experiences 56 % of all premature deaths from respiratory diseases (452 out of a total of 805).

If each CCG were to aim for reducing their respective respiratory disease related death rates in these areas to the same level as Kent and Medway then this would mean that there would be 306 fewer deaths in a three-year period.

Lower super output areas with these higher rates are identified in the CCG-specific sections of this report.

Table 2: Mortality in 20% of population with highest death rates, all respiratory disease, aged under 75, 2010-2012, males, lower super output areas.

Mortality data for all respiratory diseases, aged under 75, 2010-2012 (pooled), males

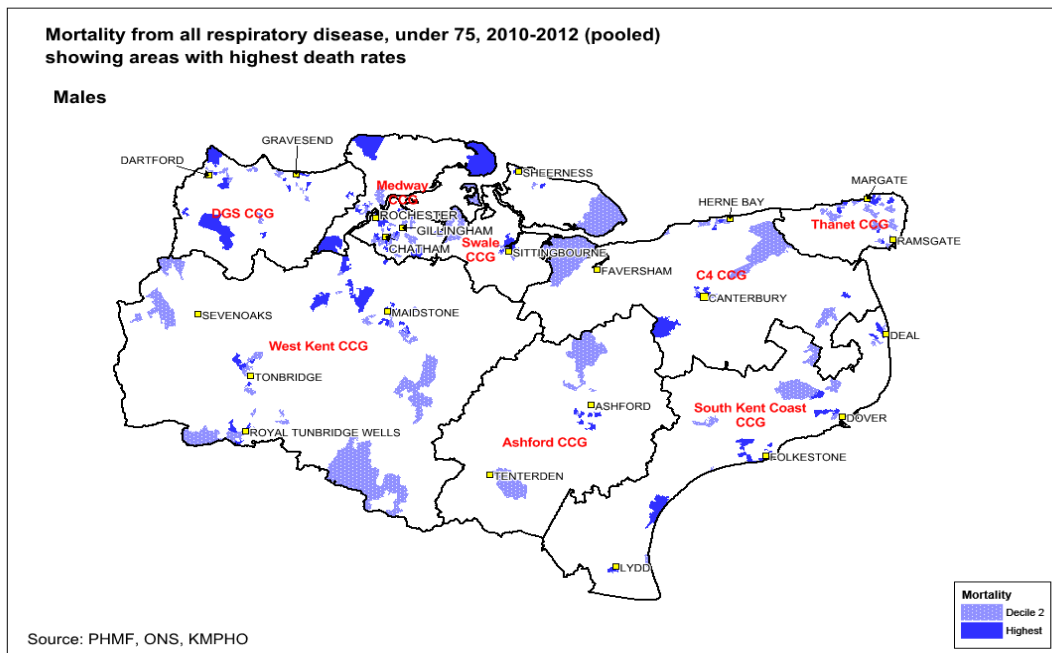
Clinical commissioning group	Mortality in 20% of population experiencing highest death rates		Numbers of deaths in 2010-2012	Directly age-standardised mortality per 100,000	Numbers of deaths which would occur if area experienced same mortality rates as K&M	Numbers of lives that could be saved in highest 2 deciles
	Numbers of deaths in 2010-2012	Directly age-standardised mortality per 100,000				
NHS Ashford CCG	19	95.7	43	21.9	5	14
NHS Canterbury and Coastal CCG	39	73.2	84	23.6	15	24
NHS Dartford, Gravesham and Swanley CCG	52	91.9	98	24.6	15	37
NHS Medway CCG	92	87.8	135	33.5	29	63
NHS South Kent Coast CCG	69	88.9	121	32.1	21	48
NHS Swale CCG	28	89.2	54	30.2	9	19
NHS Thanet CCG	62	82.0	92	36.4	21	41
NHS West Kent CCG	91	80.4	178	23.0	31	60
Kent & Medway	452	84.4	805	27.3	146	306

Source: PHMF, ONS, KMPHO

Note: Errors due to rounding may be evident

Figure 2 highlights the geographical distribution within each CCG with premature male deaths experienced in the 20% of the population which have the highest mortality rates related to respiratory disease in Kent and Medway.

Figure 2: Mortality in 20% of population with highest death rates, all respiratory disease, aged under 75, 2010-2012, males, lower super output areas



5.1.3 Cancer related under 75 mortality rates in men

Table 3 highlights number of cancer related deaths among top 20% of the male population during 2010-2012 compared to death rate across Kent and Medway. **It shows that the death rate in top 20% of the population is nearly two times higher compared to Kent and Medway (231 and 117.2 per 100,000 respectively).** The table also highlights that that 20% of the CCG male population in these subsets (top LSOA) experiences 35% of all premature deaths from cancer (1176 out of a total of 3369).

If each CCG were to aim for reducing their respective cancer related death rates in these areas to the same level as Kent and Medway then this then there would be 579 *fewer* deaths in a three-year periodⁱ.

Table 3: Mortality in 20% of population with highest death rates, all cancers, aged under 75, 2010-2012, males, lower super output areas.

Mortality data for all cancers, aged under 75, 2010-2012 (pooled), males

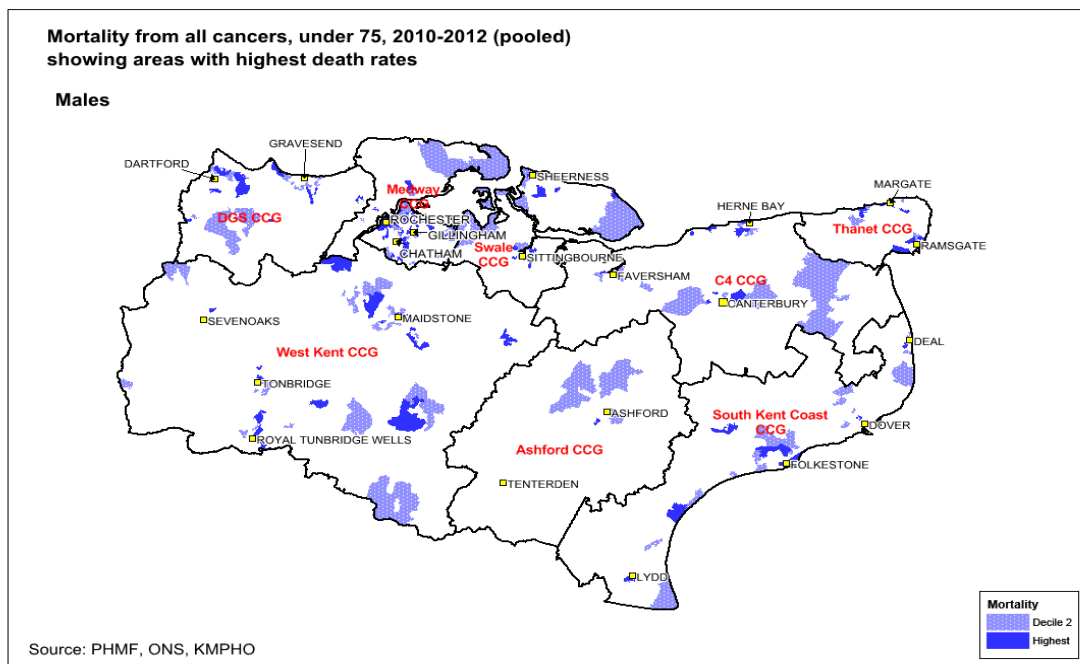
Clinical commissioning group	Mortality in 20% of population experiencing highest death rates		Numbers of deaths in 2010-2012	Directly age-standardised mortality per 100,000	Numbers of deaths which would occur if area experienced same mortality rates as K&M	Numbers of lives that could be saved in highest 2 deciles
	Numbers of deaths in 2010-2012	Directly age-standardised mortality per 100,000				
NHS Ashford CCG	39	214.2	197	99.0	21	18
NHS Canterbury and Coastal CCG	109	213.8	346	99.8	60	49
NHS Dartford, Gravesham and Swanley CCG	147	246.8	453	116.1	70	77
NHS Medway CCG	269	247.6	559	139.6	127	142
NHS South Kent Coast CCG	184	223.3	459	125.3	97	87
NHS Swale CCG	106	229.4	245	134.8	54	52
NHS Thanet CCG	107	247.2	304	127.8	51	56
NHS West Kent CCG	215	220.1	806	107.5	115	100
Kent & Medway	1176	231.0	3369	117.2	597	579

Source: PHMF, ONS, KMPHO

Note: Errors due to rounding may be evident

Figure 3 highlights the geographical distribution within each CCG with premature male deaths experienced in the 20% of the population which have the highest mortality rates related to cancer in Kent and Medway.

Figure 3 Mortality in 20% of population with highest death rates, all cancers, aged under 75, 2010-2012, males, lower super output areas



6. Conclusions

The data in this report identifies, for each CCG area, the number of disease-specific premature deaths that need to be postponed within each CCG area.

This information will assist CCGs and partners to target resources in the areas of most need and contribute significantly to the short-term gains (figure A) in reducing health inequalities. It also provides opportunities for the local system (KCC, CCGs, District Councils and other partners such as social enterprises and voluntary sector) to work together through 'Mind the Gap' action planning and addresses various factors that affect health outcomes. Local action planning provides all partners with an opportunity to work on the short, medium and long-term contributions that are attributable to healthy lifestyles, and also in preventing poor health that potentially results in the onset of preventable diseases and consequently premature mortality.

7. Recommendation(s)

Recommendation(s): The Kent Health and Wellbeing Board are asked to:

- i) Note the data reported in this paper
- ii) Support CCGs to develop action plans to address the identified number of postponed premature deaths targeting the areas with top 20% death rate.
- iii) Support the local system in working together through the local Health and Wellbeing Boards. Action planning at a local level to develop local 'Mind the Gap' needs to continue and bring together the District Council and CCG priorities to tackle health inequalities. This should be used as the mechanism to identify contribution from various parts of the system (CCGs, District Councils, KCC, Health Watch and voluntary sector) and address the wider determinants of health, health promotion and preventing poor health.

8. Contact details

Report Author:

Malti Varshney, Consultant in Public Health, Malti.varshney@kent.gov.uk

Debbie Smith, Public Health Specialist, Deborah.smith@kent.gov.uk

Julian Barlow, Senior Public Health Analyst, Julian.barlow@kent.gov.uk

Natasha Roberts, Head of Health Intelligence, natasha.roberts@kent.gov.uk

Director Lead:

Meradin Peachey, Director of Public Health, Meradin.Peachey@kent.gov.uk

Appendices:

Please Note that Blue coloured table represents data related to men and Red colour represents data related to women.

Maps for all Districts are being developed and will be provided to CCGs.

Appendix 1 - Ashford CCG district level maps

Appendix 2 - Canterbury CCG district level tables

Appendix 3 - Dartford, Gravesham, Swanley CCG district level tables

Appendix 4 - South Kent Coast CCG district level tables

Appendix 5 - Swale CCG district level tables

Appendix 6 - West Kent CCG district level tables

Appendix 7 – Thanet CCG district level tables

Table / figure Ashford 1

Mortality in females for all circulatory disease under 75, 2010-12, showing LSOAs in the highest two deciles

Place of residence				Deaths	Population	Mortality from all circulatory disease, under 75, 2010-2012 (pooled) showing areas with highest death rates	
Decile	Electoral ward	LSOA	Map index				
1	Aylesford Green	E01023972	1	Data suppressed	571	<p>Females</p>	
	Beaver	E01023973	2		698		
	Beaver	E01023976	3		693		
	Stour	E01024023	4		1247		
	Tenterden South	E01024026	5		563		
Victoria	E01024027	6	667				
2	Beaver	E01023977	7		603		
	North Williesborough	E01024004	8		770		
	Saxon Shore	E01024014	9		843		
	Victoria	E01024028	10		857		
	Weald Central	E01024031	11		645		
	Weald Central	E01024032	12		775		
Weald East	E01024034	13	1004				
Total deaths and population in highest two deciles				35	9936		
Total deaths and population in other deciles				36	43689		
Total deaths and population in NHS Ashford CCG				71	53625		
Source: PHMF, ONS, KMPHO							
Note: Errors due to rounding may have occurred							
Source: PHMF, ONS, KMPHO							
Summary data*				Population	Standardised rate	Target setting	
Total deaths in highest two deciles				35	9936	100.2	Cut mortality in two highest deciles to the Kent and Medway rate of 34.8 deaths per 100,000 - resulting in 23 deaths postponed in a three year period
Total deaths in other deciles				36	43689	21.1	
Total deaths in NHS Ashford CCG				71	53625	35.5	

* - 2010-2012 combined deaths

** - per 100,000 population, annual average for period

Table / figure Ashford 1a

Mortality in males for all circulatory disease under 75, 2010-12, showing LSOAs in the highest two deciles

Place of residence				Deaths	Population	Mortality from all circulatory disease, under 75, 2010-2012 (pooled) showing areas with highest death rates	
Decile	Electoral ward	LSOA	Map index				
1	Beaver	E01023974	1	Data suppressed	605	<p>Males</p>	
	Godinton	E01023992	2		626		
	Norman	E01024002	3		661		
	Park Farm South	E01024006	4		670		
	Singleton South	E01024016	5		601		
	Wye	E01024040	6		466		
2	Biddenden	E01023979	7		546		
	Boughton Aluph and Eastwell	E01023982	8		1617		
	Bybrook	E01023984	9		568		
	Charing	E01023986	10		553		
	Isle of Oxney	E01023998	11		520		
	North Williesborough	E01024005	12		751		
	Park Farm North	E01024008	13		1054		
	Washford	E01024030	14		1553		
Total deaths and population in highest two deciles				59	10791		
Total deaths and population in other deciles				115	41673		
Total deaths and population in NHS Ashford CCG				174	52464		
Source: PHMF, ONS, KMPHO							
Note: Errors due to rounding may have occurred							
Source: PHMF, ONS, KMPHO							
Summary data*				Population	Standardised rate**	Target setting	
Total deaths in highest two deciles				59	10791	175.9	Cut mortality in two highest deciles to the Kent and Medway rate of 34.8 deaths per 100,000 - resulting in 31 deaths postponed in a three year period
Total deaths in other deciles				115	41673	65.5	
Total deaths in NHS Ashford CCG				174	52464	106.3	

* - 2010-2012 combined deaths

** - per 100,000 population, annual average for period

Table / figure Ashford 2

Mortality in females for all respiratory disease under 75, 2010-12, showing LSOAs in the highest two deciles

Place of residence		Map index	Deaths	Population	Mortality from all respiratory disease, under 75, 2010-2012 (pooled) showing areas with highest death rates Females	
Decile	Electoral ward					LSOA
1	Aylesford Green	E01023972	1	571		
	Bybrook	E01023984	2	612		
	Downs North	E01023987	3	474		
	Downs West	E01023990	4	548		
	North Willesborough	E01024005	5	690		
	Stanhope	E01024020	6	860		
	Victoria	E01024028	7	857		
2	Little Burton Farm	E01024000	8	1473		
	St Michaels	E01024012	9	489		
	Singleton South	E01024017	10	690		
	South Willesborough	E01024018	11	1644		
	Weald Central	E01024031	12	645		
Total deaths and population in highest two deciles			17	9553	Source: PHMF, ONS, KMPHO Note: Errors due to rounding may have occurred	
Total deaths and population in other deciles			15	44072		
Total deaths and population in NHS Ashford CCG			32	53625		

Summary data*	Population	Standardised rate	Target setting
Total deaths in highest two deciles	17	9553	56.4
Total deaths in other deciles	15	44072	8.3
Total deaths in NHS Ashford CCG	32	53625	15.6

Target setting
Cut mortality in two highest deciles to the Kent and Medway rate of 34.8 deaths per 100,000
- resulting in 11 deaths postponed in a three year period

* - 2010-2012 combined deaths
** - per 100,000 population, annual average for period

Table / figure Ashford 2a

Mortality in males for all respiratory disease under 75, 2010-12, showing LSOAs in the highest two deciles

Place of residence		Map index	Deaths	Population	Mortality from all respiratory disease, under 75, 2010-2012 (pooled) showing areas with highest death rates Males	
Decile	Electoral ward					LSOA
1	Aylesford Green	E01023973	1	673		
	Beaver	E01023975	2	715		
	Norman	E01024002	3	661		
	Park Farm South	E01024006	4	670		
	Singleton South	E01024016	5	601		
	Stanhope	E01024019	6	752		
2	Beaver	E01023974	7	605		
	Bockhanger	E01023980	8	475		
	Downs West	E01023989	9	587		
	Tenterden South	E01024026	10	498		
Total deaths and population in highest two deciles			19	6237	Source: PHMF, ONS, KMPHO Note: Errors due to rounding may have occurred	
Total deaths and population in other deciles			24	46227		
Total deaths and population in NHS Ashford CCG			43	52464		

Summary data*	Population	Standardised rate**	Target setting
Total deaths in highest two deciles	19	6237	95.7
Total deaths in other deciles	24	46227	13.3
Total deaths in NHS Ashford CCG	43	52464	26.5

Target setting
Cut mortality in two highest deciles to the Kent and Medway rate of 34.8 deaths per 100,000
- resulting in 14 deaths postponed in a three year period

* - 2010-2012 combined deaths
** - per 100,000 population, annual average for period

Table / figure Ashford 3

Mortality in females for all cancer under 75, 2010-12, showing LSOAs in the highest two deciles

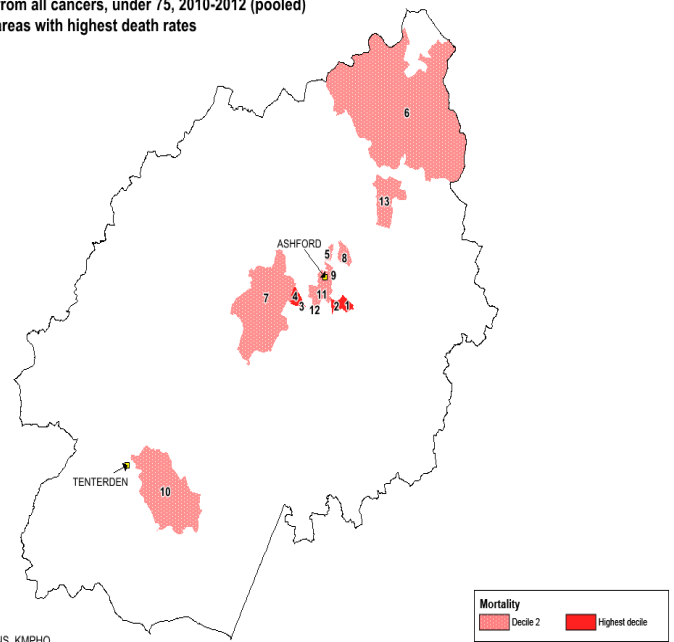
Decile	Place of residence			Deaths	Population
	Electoral ward	LSOA	Map index		
1	Aylesford Green	E01023972	1	Data suppressed	571
		E01023973	2		698
	Beaver	E01023974	3		681
	Singleton South	E01024016	4		604
2	Bybrook	E01023984	5		612
	Downs North	E01023988	6		625
	Great Chart with Singleton North	E01023994	7		1660
	Little Burton Farm	E01024000	8		1473
	Stour	E01024021	9		576
	Tenterden South	E01024026	10		563
	Victoria	E01024027	11		667
		E01024029	12		1070
	Wye	E01024040	13		492
Total deaths and population in highest two deciles				58	10292
Total deaths and population in other deciles				112	43333
Total deaths and population in NHS Ashford CCG				170	53625

Source: PHMF, ONS, KMPHO

Note: Errors due to rounding may have occurred

Mortality from all cancers, under 75, 2010-2012 (pooled) showing areas with highest death rates

Females



Source: PHMF, ONS, KMPHO

Summary data*	Population	Standardised rate	Target setting
Total deaths in highest two deciles	58	179.5	Cut mortality in two highest deciles to the Kent and Medway rate of 34.8 deaths per 100,000 - resulting in 27 deaths postponed in a three year period
Total deaths in other deciles	112	64.6	
Total deaths in NHS Ashford CCG	170	83.3	

* - 2010-2012 combined deaths

** - per 100,000 population, annual average for period

Table / figure Ashford 3a

Mortality in males for all cancer under 75, 2010-12, showing LSOAs in the highest two deciles

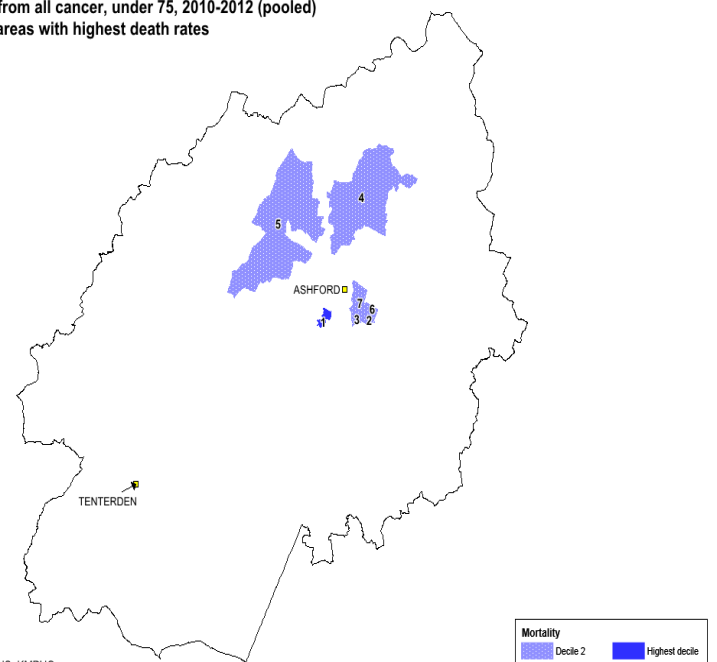
Decile	Place of residence			Deaths	Population	
	Electoral ward	LSOA	Map index			
1	Beaver	E01023975	1	Data suppressed	715	
2	Aylesford Green	E01023972	2		585	
		E01023973	3		673	
	Boughton Aluph and Eastwell	E01023982	4		1617	
	Downs West	E01023990	5		507	
	North Willlesborough	E01024005	6		751	
	Stour	E01024023	7		1175	
	Total deaths and population in highest two deciles				39	6023
Total deaths and population in other deciles					158	46441
Total deaths and population in NHS Ashford CCG					197	52464

Source: PHMF, ONS, KMPHO

Note: Errors due to rounding may have occurred

Mortality from all cancer, under 75, 2010-2012 (pooled) showing areas with highest death rates

Males



Source: PHMF, ONS, KMPHO

Summary data*	Population	Standardised rate**	Target setting
Total deaths in highest two deciles	39	214.21	Cut mortality in two highest deciles to the Kent and Medway rate of 34.8 deaths per 100,000 - resulting in 18 deaths postponed in a three year period
Total deaths in other deciles	158	87.39	
Total deaths in NHS Ashford CCG	197	119.78	

* - 2010-2012 combined deaths

** - per 100,000 population, annual average for period

Maps to be added

Table Canterbury 1

Mortality in females for all circulatory disease under 75, 2010-12, showing LSOAs in the highest two deciles

Decile	Place of residence			Deaths	Population
	Electoral ward	LSOA	Map index		
1	Blean Forest	E01024051	1	Data suppressed	2901
	Herne and Broomfield	E01024076	2		888
	Northgate	E01024093	3		1087
	Seasalter	E01024108	4		604
	Westgate	E01024126	5		686
	Wincheap	E01024128	6		787
	Watling	E01024627	7		905
2	Barton	E01024047	8		764
		E01024048	9		840
	Gorrell	E01024061	10		716
	Herne and Broomfield	E01024075	11		717
	Heron	E01024078	12		756
	Little Stour	E01024084	13		515
	Northgate	E01024090	14		1091
	St Stephens	E01024101	15		1105
	Wincheap	E01024129	16		816
	Sandwich	E01024242	17		776
	Boughton and Courtenay	E01024555	18		585
Total deaths and population in highest two deciles				42	16539
Total deaths and population in other deciles				82	75148
Total deaths and population in NHS Canterbury CCG				124	91687

Source: PHMF, ONS, KMPHO

Note: Errors due to rounding may have occurred

Summary data*	Population	Standardised rate	Target setting
Total deaths in highest two deciles	42	16539	93.6
Total deaths in other deciles	82	75148	23.0
Total deaths in NHS Canterbury CCG	124	91687	31.5

Cut mortality in two highest deciles to the Kent and Medway rate of 34.8 deaths per 100,000
- resulting in 26 deaths postponed in a three year period

* - 2010-2012 combined deaths

** - per 100,000 population, annual average for period

Table Canterbury 1a

Mortality in males for all circulatory disease under 75, 2010-12, showing LSOAs in the highest two deciles

Decile	Place of residence			Deaths	Population
	Electoral ward	LSOA	Map index		
1	Harbour	E01024071	1	Data suppressed	738
	Heron	E01024081	2		610
		E01024082	3		602
		E01024083	4		548
		St Stephens	E01024099		5
	West Bay	E01024119	6		710
2	Barton	E01024045	7		629
	Chestfield and Swalecliffe	E01024059	8		619
		E01024066	9		698
		Harbour	E01024070		10
	Northgate	E01024091	11		726
	Wincheap	E01024127	12		722
	Davington Priory	E01024563	13		759
Total deaths and population in highest two deciles				59	9056
Total deaths and population in other deciles				172	80533
Total deaths and population in NHS Canterbury CCG				231	89589

Source: PHMF, ONS, KMPHO

Note: Errors due to rounding may have occurred

Summary data*	Population	Standardised rate**	Target setting
Total deaths in highest two deciles	59	9056	195.2
Total deaths in other deciles	172	80533	55.9
Total deaths in NHS Canterbury CCG	231	89589	68.3

Cut mortality in two highest deciles to the Kent and Medway rate of 34.8 deaths per 100,000
- resulting in 34 deaths postponed in a three year period

* - 2010-2012 combined deaths

** - per 100,000 population, annual average for period

Table Canterbury 2

Mortality in females for all respiratory disease under 75, 2010-12, showing LSOAs in the highest two deciles

Decile	Place of residence			Deaths	Population
	Electoral ward	LSOA	Map index		
1	Gorrell	E01024061	1	Data suppressed	716
		E01024062	2		671
	Heron	E01024081	3		591
		E01024083	4		590
	Northgate	E01024090	5		1091
		E01024093	6		1087
	Davington Priory	E01024563	7		712
2	Barton	E01024045	8		638
		E01024049	9		661
	Chestfield and Swalecliffe	E01024059	10		661
		E01024079	11		669
	Heron	E01024080	12		581
		E01024084	13		515
	Northgate	E01024092	14		900
	Reculver	E01024096	15	771	
	Sturry North	E01024110	16	524	
	West Bay	E01024117	17	668	
	Westgate	E01024122	18	641	
	Little Stour and Ashstone	E01024206	19	778	
		E01024208	20	769	
	Boughton and Courtenay	E01024556	21	519	
St Ann's	E01024603	22	573		
	E01024605	23	612		
Teynham and Lynsted	E01024622	24	751		
Total deaths and population in highest two deciles				41	16689
Total deaths and population in other deciles				26	74999
Total deaths and population in NHS Canterbury CCG				67	91688

Source: PHMF, ONS, KMPHO

Note: Errors due to rounding may have occurred

Summary data*	Population	Standardised rate	Target setting
Total deaths in highest two deciles	41	16689	17.0
Total deaths in other deciles	26	74999	8.1
Total deaths in NHS Canterbury CCG	67	91688	15.6

Cut mortality in two highest deciles to the Kent and Medway rate of 34.8 deaths per 100,000
- resulting in 28 deaths postponed in a three year period

Table Canterbury 2a

Mortality in males for all respiratory disease under 75, 2010-12, showing LSOAs in the highest two deciles

Decile	Place of residence			Deaths	Population
	Electoral ward	LSOA	Map index		
1	Barton	E01024048	1	Data suppressed	863
		Chartham and Stone Street	E01024052		2
	Greenhill and Eddington	E01024066	3		698
		E01024079	4		660
	Heron	E01024080	5		607
		E01024093	6		807
	St Stephens	E01024103	7		763
	Westgate	E01024125	8		1225
	Sandwich	E01024243	9		667
2	Barton	E01024044	10		808
		E01024049	11		922
	Harbour	E01024070	12		614
	Heron	E01024082	13		602
		E01024083	14		548
	Marshside	E01024087	15		587
	West Bay	E01024118	16		790
		E01024120	17		633
	Westgate	E01024121	18		687
	Eastry	E01024202	19	799	
Teynham and Lynsted	E01024622	20	766		
Total deaths and population in highest two deciles				39	15058
Total deaths and population in other deciles				45	74530
Total deaths and population in NHS Canterbury CCG				84	89588

Source: PHMF, ONS, KMPHO

Note: Errors due to rounding may have occurred

Summary data*	Population	Standardised rate**	Target setting
Total deaths in highest two deciles	39	15058	73.2
Total deaths in other deciles	45	74530	14.9
Total deaths in NHS Canterbury CCG	84	89588	23.6

Cut mortality in two highest deciles to the Kent and Medway rate of 34.8 deaths per 100,000
- resulting in 24 deaths postponed in a three year period

* -2010-2012 combined deaths

** - per 100,000 population, annual average for period

Table Canterbury 3

Mortality in females for all cancer under 75, 2010-12, showing LSOAs in the highest two deciles

Decile	Place of residence			Deaths	Population
	Electoral ward	LSOA	Map index		
1	Barham Downs	E01024043	1	Data suppressed	625
	Gorrell	E01024063	2		725
	Herne and Broomfield	E01024073	3		807
	Herne and Broomfield	E01024075	4		717
	Herne and Broomfield	E01024077	5		696
	Heron	E01024080	6		581
	Seasalter	E01024105	7		675
	Little Stour and Ashstone	E01024207	8		841
	Sandwich	E01024243	9		750
	Boughton and Courtenay	E01024555	10		585
	St Ann's	E01024604	11		624
2	Gorrell	E01024061	12		716
	Harbour	E01024069	13		700
	Heron	E01024078	14		756
	Little Stour	E01024084	15		515
	Marshside	E01024087	16		573
	West Bay	E01024117	17		668
	West Bay	E01024118	18		822
	Wincheap	E01024127	19		722
	Wincheap	E01024130	20		1174
	Little Stour and Ashstone	E01024206	21		778
	Watling	E01024626	22		673
Total deaths and population in highest two deciles				111	15723
Total deaths and population in other deciles				213	75965
Total deaths and population in NHS Canterbury CCG				324	91688

Source: PHMF, ONS, KMPHO

Note: Errors due to rounding may have occurred

Summary data*	Population	Standardised rate	Target setting
Total deaths in highest two deciles	111	15723	177.1
Total deaths in other deciles	213	75965	72.0
Total deaths in NHS Canterbury CCG	324	91688	91.4

Cut mortality in two highest deciles to the Kent and Medway rate of 34.8 deaths per 100,000
resulting in 51 deaths postponed in a three year period

* - 2010-2012 combined deaths

** - per 100,000 population, annual average for period

Table Canterbury 3a

Mortality in males for all cancer under 75, 2010-12, showing LSOAs in the highest two deciles

Decile	Place of residence			Deaths	Population
	Electoral ward	LSOA	Map index		
1	Barton	E01024047	1	Data suppressed	801
		E01024049	2		922
	Chestfield and Swalecliffe	E01024059	3		619
	Greenhill and Eddington	E01024064	4		1103
	Harbour	E01024071	5		738
	Heron	E01024078	6		759
	St Stephens	E01024103	7		763
2	Westgate	E01024126	8		679
	St Ann's	E01024605	9		598
	Harbledown	E01024067	10		479
	Herne and Broomfield	E01024073	11		818
	Heron	E01024079	12		660
	Heron	E01024081	13		610
	Little Stour	E01024084	14		499
	Northgate	E01024093	15		807
	Little Stour and Ashstone	E01024206	16		744
	Little Stour and Ashstone	E01024207	17		823
	Abbey	E01024552	18		806
	Boughton and Courtenay	E01024557	19		673
	Watling	E01024627	20		882
Total deaths and population in highest two deciles				109	14783
Total deaths and population in other deciles				237	74806
Total deaths and population in NHS Canterbury CCG				346	89589

Source: PHMF, ONS, KMPHO

Note: Errors due to rounding may have occurred

Summary data*	Population	Standardised rate**	Target setting
Total deaths in highest two deciles	109	14783	213.8
Total deaths in other deciles	237	74806	78.8
Total deaths in NHS Canterbury CCG	346	89589	56.9

Cut mortality in two highest deciles to the Kent and Medway rate of 34.8 deaths per 100,000
resulting in 49 deaths suppressed in a three year period

* - 2010-2012 combined deaths

** - per 100,000 population, annual average for period

Table Dartford, Gravesham and Swanley 1
Mortality in females for all circulatory disease under 75, 2010-12, showing LSOAs in the highest two deciles

Place of residence					
Decile	Electoral ward	LSOA	Map index	Deaths	Population
1	Bean and Darenth	E01024135	1	Data suppressed	626
	Newtown	E01024161	2		915
	Stone	E01024170	3		744
		E01024172	4		852
	Swanscombe	E01024176	5		752
		E01024179	6		1247
	Town	E01024181	7		590
	Wilmington	E01024187	8		492
		E01024188	9		543
	Meopham South and Vigo	E01024275	10		682
	Northfleet South	E01024280	11		752
		E01024285	12		627
	Painters Ash	E01024287	13		640
	Pelham	E01024291	14		760
		E01024305	15		652
	Singlewell	E01024306	16		566
	Westcourt	E01024308	17		664
	Whitehill	E01024315	18		748
2	Bean and Darenth	E01024133	19		681
	Littlebrook	E01024155	20		738
		E01024162	21		697
	Newtown	E01024163	22		815
	Princes	E01024165	23		732
	Swanscombe	E01024178	24		817
	Town	E01024182	25		764
	Coldharbour	E01024263	26		743
		E01024294	27		1107
	Riverside	E01024296	28		1131
	Westcourt	E01024309	29		637
	Fawkham and West Kingsdown	E01024435	30		708
		E01024445	31		584
	Hextable	E01024447	32		610
	Swanley St Mary's	E01024476	33		820
		E01024480	34		724
	Swanley White Oak	E01024481	35		750
Total deaths and population in highest two deciles				85	25910
Total deaths and population in other deciles				65	86476
Total deaths and population in NHS Dartford, Gravesham and Swanley CCG				150	112386

Source: PHMF, ONS, KMPHO

Note: Errors due to rounding may have occurred

Summary data*	Population	Standardised rate	Target setting
Total deaths in highest two deciles	85	25910	107.1
Total deaths in other deciles	65	86476	18.6
Total deaths in NHS Dartford, Gravesham and Swanley CCG	150	112386	35.8

Cut mortality in two highest deciles to the Kent and Medway rate of 34.8 deaths per 100,000
- resulting in 57 deaths postponed in a three year period

* - 2010-2012 combined deaths

** - per 100,000 population, annual average for period

Table Dartford, Gravesham and Swanley 1a

Mortality in males for all circulatory disease under 75, 2010-12, showing LSOAs in the highest two deciles

Place of residence					
Decile	Electoral ward	LSOA	Map index	Deaths	Population
1	Bean and Darent	E01024135	1	Data suppressed	578
	Brent	E01024138	2		735
	Castle	E01024140	3		1136
	Greenhithe	E01024141	4		710
	Joyce Green	E01024148	5		755
	Newtown	E01024162	6		808
	Princes	E01024165	7		662
	Swanscombe	E01024176	8		687
		E01024178	9		820
	Central	E01024257	10		844
		E01024258	11		777
	Northfleet North	E01024277	12		864
		E01024278	13		922
	Pelham	E01024289	14		1126
	Singlewell	E01024303	15		706
		E01024305	16		647
	Westcourt	E01024311	17		700
	Swanley St Mary's	E01024477	18		649
2	Brent	E01024139	19		767
	Greenhithe	E01024142	20		1085
	Littlebrook	E01024154	21		613
		E01024155	22		651
	Newtown	E01024163	23		827
		E01024164	24		898
	Princes	E01024166	25		735
	Swanscombe	E01024179	26		1176
	Town	E01024182	27		748
	Coldharbour	E01024262	28		854
	Northfleet North	E01024279	29		793
	Northfleet South	E01024282	30		767
	Painters Ash	E01024288	31		554
	Pelham	E01024291	32		756
	Riverside	E01024296	33		1151
	Singlewell	E01024306	34		555
	Woodlands	E01024318	35		738
	Ash	E01024413	36		737
Total deaths and population in highest two deciles				149	28531
Total deaths and population in other deciles				189	81728
Total deaths and population in NHS Dartford, Gravesham and Swanley CCG				338	110259

Source: PHMF, ONS, KMPHO

Note: Errors due to rounding may have occurred

Summary data*	Population	Standardised rate**	Target setting
Total deaths in highest two deciles	149	28531	191.6
Total deaths in other deciles	189	81728	60.4
Total deaths in NHS Dartford, Gravesham and Swanley CCG	338	110259	86.9

- resulting in 84 deaths postponed in a three year period

* - 2010-2012 combined deaths

** - per 100,000 population, annual average for period

Table Dartford, Gravesham and Swanley 2

Mortality in females for all respiratory disease under 75, 2010-12, showing LSOAs in the highest two deciles

Decile	Place of residence			Deaths	Population
	Electoral ward	LSOA	Map index		
1	Bean and Darenth	E01024133	1	Data suppressed	681
		E01024135	2		626
	Brent	E01024136	3		723
	Heath	E01024146	4		677
	Joyce Green	E01024148	5		780
	Littlebrook	E01024156	6		713
	Princes	E01024165	7		732
		E01024166	8		834
	Stone	E01024172	9		852
	Swanscombe	E01024177	10		778
	West Hill	E01024184	11		819
	Coldharbour	E01024263	12		743
	Singlewell	E01024306	13		566
	Westcourt	E01024311	14		711
	Ash	E01024414	15		798
	Swanley White Oak	E01024481	16		750
2	Joydens Wood	E01024152	17	1312	
	Newtown	E01024162	18	697	
	Stone	E01024171	19	701	
	Wilmington	E01024189	20	690	
	Central	E01024257	21	835	
	Northfleet North	E01024278	22	890	
	Northfleet South	E01024284	23	783	
	Painters Ash	E01024287	24	640	
	Riverside	E01024294	25	1107	
	Singlewell	E01024305	26	652	
		E01024307	27	639	
	Westcourt	E01024312	28	623	
	Farningham, Horton Kirby and South Darenth	E01024434	29	798	
	Swanley Christchurch and Swanley Village	E01024472	30	653	
	Swanley St Mary's	E01024476	31	820	
Total deaths and population in highest two deciles				47	23623
Total deaths and population in other deciles				27	88751
Total deaths and population in NHS Dartford, Gravesham and Swanley CCG				74	112374

Source: PHMF, ONS, KMPHO

Note: Errors due to rounding may have occurred

Summary data*	Population	Standardised rate	Target setting
Total deaths in highest two deciles	47	23623	66.7
Total deaths in other deciles	27	88751	7.4
Total deaths in NHS Dartford, Gravesham and Swanley CCG	74	112374	17.7

Cut mortality in two highest deciles to the Kent and Medway rate of 34.8 deaths per 100,000
- resulting in 34 deaths postponed in a three year period

* - 2010-2012 combined deaths

** - per 100,000 population, annual average for period

Table Dartford, Gravesham and Swanley 2a

Mortality in males for all respiratory disease under 75, 2010-12, showing LSOAs in the highest two deciles

Decile	Place of residence			Deaths	Population
	Electoral ward	LSOA	Map index		
1	Brent	E01024138	1	Data suppressed	735
	Joyce Green	E01024149	2		1304
	Newtown	E01024164	3		898
	Central	E01024257	4		844
	Coldharbour	E01024264	5		736
	Higham	E01024266	6		470
	Northfleet South	E01024283	7		635
	Riverside	E01024295	8		852
		E01024296	9		1151
		E01024308	10		605
		E01024311	11		700
	Ash	E01024413	12		737
	Farningham, Horton Kirby and South Darenth	E01024433	13		610
	Swanley St Mary's	E01024477	14		649
	Swanley White Oak	E01024482	15		645
2	Brent	E01024139	16	767	
	Greenhithe	E01024142	17	1085	
	Newtown	E01024162	18	808	
	Stone	E01024169	19	693	
	Town	E01024181	20	658	
	Northfleet North	E01024277	21	864	
		E01024304	22	652	
	Singlewell	E01024305	23	647	
	Woodlands	E01024318	24	738	
Hartley and Hodsoll Street	E01024443	25	556		
Total deaths and population in highest two deciles				52	19039
Total deaths and population in other deciles				46	91220
Total deaths and population in NHS Dartford, Gravesham and Swanley CCG				98	110259

Source: PHMF, ONS, KMPHO

Note: Errors due to rounding may have occurred

Summary data*	Population	Standardised rate**	Target setting
Total deaths in highest two deciles	52	19039	91.9
Total deaths in other deciles	46	91220	13.4
Total deaths in NHS Dartford, Gravesham and Swanley CCG	98	110259	24.6

- resulting in 37 deaths postponed in a three year period

* - 2010-2012 combined deaths

** - per 100,000 population, annual average for period

Table Dartford, Gravesham and Swanley 3

Mortality in females for all cancer under 75, 2010-12, showing LSOAs in the highest two deciles

Place of residence					
Decile	Electoral ward	LSOA	Map index	Deaths	Population
1	Brent	E01024138	1	Data suppressed	803
	Greenhithe	E01024142	2		1140
	Greenhithe	E01024143	3		999
	Joyce Green	E01024148	4		780
	Newtown	E01024162	5		697
		E01024164	6		869
	Stone	E01024172	7		852
	Swanscombe	E01024179	8		1247
	Wilmington	E01024189	9		690
	Central	E01024258	10		770
	Coldharbour	E01024262	11		846
	Riverview	E01024299	12		691
	Ash	E01024415	13		670
	Hartley and Hodsoll Street	E01024442	14		664
	Swanley Christchurch and Swanley Village	E01024473	15		757
2	Bean and Darenth	E01024133	16		681
	Heath	E01024145	17		719
	Littlebrook	E01024156	18		713
	Longfield, New Barn and Southfleet	E01024158	19		687
	Princes	E01024168	20		621
	Stone	E01024170	21		744
	Sutton-at-Hone and Hawley	E01024174	22		494
	Central	E01024257	23		835
	Northfleet South	E01024280	24		752
	Painters Ash	E01024287	25		640
	Riverside	E01024296	26		1131
	Singlewell	E01024307	27		639
	Eynsford	E01024431	28		820
	Hartley and Hodsoll Street	E01024441	29		662
Total deaths and population in highest two deciles				139	22613
Total deaths and population in other deciles				242	89764
Total deaths and population in NHS Dartford, Gravesham and Swanley CCG				381	112377

Source: PHMF, ONS, KMPHO

Note: Errors due to rounding may have occurred

Summary data*	Population	Standardised rate	Target setting
Total deaths in highest two deciles	139	22613	191.1
Total deaths in other deciles	242	89764	71.3
Total deaths in NHS Dartford, Gravesham and Swanley CCG	381	112377	93.0

- resulting in 70 deaths postponed in a three year period

* - 2010-2012 combined deaths

** - per 100,000 population, annual average for period

Table Dartford, Gravesham and Swanley 3a

Mortality in males for all cancer under 75, 2010-12, showing LSOAs in the highest two deciles

Decile	Place of residence			Deaths	Population
	Electoral ward	LSOA	Map index		
1	Bean and Darenth	E01024133	1	Data suppressed	701
	Joyce Green	E01024148	2		755
	Littlebrook	E01024154	3		613
		E01024156	4		790
	Stone	E01024170	5		700
		E01024171	6		755
	Wilmington	E01024187	7		452
	Higham	E01024266	8		470
	Northfleet North	E01024278	9		922
		E01024303	10		706
	Singlewell	E01024305	11		647
		E01024306	12		555
	Westcourt	E01024308	13		605
	Whitehill	E01024313	14		650
	Hartley and Hodsoll Street	E01024444	15		579
	Swanley St Mary's	E01024476	16		757
2		E01024162	17	808	
	Newtown	E01024163	18	827	
	Sutton-at-Hone and Hawley	E01024175	19	592	
	Town	E01024180	20	652	
	Central	E01024260	21	855	
	Coldharbour	E01024263	22	713	
		E01024277	23	864	
	Northfleet North	E01024283	24	635	
	Riverside	E01024293	25	768	
	Woodlands	E01024317	26	742	
		E01024433	27	610	
	Farningham, Horton Kirby and South Darenth	E01024434	28	820	
	Swanley White Oak	E01024480	29	671	
Total deaths and population in highest two deciles				147	20214
Total deaths and population in other deciles				306	90043
Total deaths and population in NHS Dartford, Gravesham and Swanley CCG				453	110257

Source: PHMF, ONS, KMPHO

Note: Errors due to rounding may have occurred

Summary data*	Population	Standardised rate**	Target setting
Total deaths in highest two deciles	147	20214	Cut mortality in two highest deciles to the Kent and Medway rate of 34.8 deaths per 100,000 - resulting in 77 deaths postponed in a three year period
Total deaths in other deciles	306	90043	
Total deaths in NHS Dartford, Gravesham and Swanley CCG	453	110257	

* - 2010-2012 combined deaths

** - per 100,000 population, annual average for period

Table South Kent Coast 1

Mortality in females for all circulatory disease under 75, 2010-12, showing LSOAs in the highest two deciles

Decile	Place of residence			Deaths	Population
	Electoral ward	LSOA	Map index		
1	Buckland	E01024193	1	Data suppressed	673
		E01024196	2		685
	Castle	E01024199	3		798
	Middle Deal and Sholden	E01024219	4		576
		E01024220	5		617
	St Radigunds	E01024240	6		764
	Folkestone East	E01024498	7		833
	Folkestone Foord	E01024499	8		687
	Folkestone Harbour	E01024504	9		808
	Folkestone Harvey Central	E01024506	10		585
	Folkestone Harvey West	E01024511	11		586
	Folkestone Park	E01024517	12		649
	Lydd	E01024534	13		686
2	Buckland	E01024194	14	691	
	Maxton, Elms Vale and Priory	E01024213	15	623	
		E01024215	16	678	
	North Deal	E01024229	17	592	
	St Radigunds	E01024241	18	929	
	Whitfield	E01024254	19	915	
	Dymchurch and St Mary's Bay	E01024487	20	579	
		E01024488	21	549	
	Folkestone Foord	E01024500	22	620	
	Folkestone Harvey West	E01024510	23	598	
	Hythe Central	E01024524	24	593	
Hythe East	E01024528	25	585		
North Downs West	E01024545	26	630		
Total deaths and population in highest two deciles				67	17529
Total deaths and population in other deciles				76	69352
Total deaths and population in NHS South Kent Coast CCG				143	86881

Source: PHMF, ONS, KMPHO

Note: Errors due to rounding may have occurred

Summary data*	Population	Standardised rate	Target setting
Total deaths in highest two deciles	67	17529	97.6
Total deaths in other deciles	76	69352	22.9
Total deaths in NHS South Kent Coast CCG	143	86881	36.6
			Cut mortality in two highest deciles to the Kent and Medway rate of 34.8 deaths per 100,000
			- resulting in 43 deaths postponed in a three year period

* - 2010-2012 combined deaths

** - per 100,000 population, annual average for period

Table South Kent Coast 1a

Mortality in males for all circulatory disease under 75, 2010-12, showing LSOAs in the highest two deciles

Place of residence					
Decile	Electoral ward	LSOA	Map index	Deaths	Population
1	Aylesham	E01024190	1	Data suppressed	646
	Maxton, Elms Vale and Priory	E01024215	2		670
		E01024216	3		679
	Mill Hill	E01024222	4		680
	North Deal	E01024229	5		627
	St Radigunds	E01024240	6		683
	St Radigunds	E01024241	7		804
	Tower Hamlets	E01024248	8		822
	Dymchurch and St Mary's Bay	E01024487	9		484
		E01024488	10		484
	Folkestone East	E01024496	11		671
		E01024504	12		769
		E01024505	13		800
	Folkestone Harvey Central	E01024506	14		802
	Folkestone Sandgate	E01024520	15		537
	Hythe Central	E01024522	16		530
	E01024203	17	671		
	E01024204	18	660		
Mill Hill	E01024223	19	642		
North Deal	E01024228	20	614		
St Radigunds	E01024239	21	699		
Dymchurch and St Mary's Bay	E01024486	22	870		
Folkestone Foord	E01024499	23	664		
	E01024512	24	717		
	E01024513	25	689		
Folkestone Park	E01024515	26	600		
Hythe West	E01024531	27	593		
North Downs East	E01024541	28	910		
Romney Marsh	E01024548	29	617		
Total deaths and population in highest two deciles				139	19634
Total deaths and population in other deciles				210	64876
Total deaths and population in NHS South Kent Coast CCG				349	84510

Source: PHMF, ONS, KMPHO

Note: Errors due to rounding may have occurred

Summary data*	Population	Standardised rate**	Target setting
Total deaths in highest two deciles	139	19634	186.3
Total deaths in other deciles	210	64876	72.7
Total deaths in NHS South Kent Coast CCG	349	84510	96.5

- resulting in 77 deaths postponed in a three year period

* - 2010-2012 combined deaths

** -per 100,000 population, annual average for period

Table South Kent Coast 2

Mortality in females for all respiratory disease under 75, 2010-12, showing LSOAs in the highest two deciles

Decile	Place of residence			Deaths	Population
	Electoral ward	LSOA	Map index		
1	Aylesham	E01024191	1	Data suppressed	810
	Buckland	E01024193	2		673
		E01024196	3		685
	Capel-le-Ferne	E01024198	4		1003
	Eastry	E01024201	5		711
	Tower Hamlets	E01024247	6		790
	Whitfield	E01024254	7		915
		E01024496	8		711
	Folkestone East	E01024498	9		833
		E01024506	10		585
	Folkestone Harvey Central	E01024508	11		714
		E01024547	12		590
	Romney Marsh	E01024548	13		546
2	Buckland	E01024195	14		652
	Maxton, Elms Vale and Priory	E01024214	15		665
	Middle Deal and Sholden	E01024219	16		576
	Dymchurch and St Mary's Bay	E01024486	17		834
	Folkestone Cheriton	E01024495	18		820
	Folkestone Harvey Central	E01024507	19		796
	Folkestone Morehall	E01024513	20		728
		E01024520	21		630
	Folkestone Sandgate	E01024521	22		668
		E01024525	23		570
	Hythe Central	E01024534	24		686
	Lydd	E01024536	25		923
	Romney Marsh	E01024549	26		531
Total deaths and population in highest two deciles				45	18645
Total deaths and population in other deciles				35	68224
Total deaths and population in NHS South Kent Coast CCG				80	86869

Source: PHMF, ONS, KMPHO

Note: Errors due to rounding may have occurred

Summary data*	Population	Standardised rate	Target setting
Total deaths in highest two deciles	45	18645	Cut mortality in two highest deciles to the Kent and Medway rate of 34.8 deaths per 100,000 - resulting in 31 deaths postponed in a three year period
Total deaths in other deciles	35	68224	
Total deaths in NHS South Kent Coast CCG	80	86869	

* - 2010-2012 combined deaths

** - per 100,000 population, annual average for period

Table South Kent Coast 2a

Mortality in males for all respiratory disease under 75, 2010-12, showing LSOAs in the highest two deciles

Decile	Place of residence		Map index	Deaths	Population
	Electoral ward	LSOA			
1	Lydden and Temple Ewell	E01024211	1	Data suppressed	420
	Middle Deal and Sholden	E01024219	2		520
		E01024220	3		637
	St Radigunds	E01024240	4		683
	Tower Hamlets	E01024246	5		855
		E01024247	6		771
	Dymchurch and St Mary's Bay	E01024486	7		870
		E01024487	8		484
	Folkestone Cheriton	E01024488	9		484
		E01024492	10		646
	Folkestone East	E01024495	11		874
		E01024498	12		740
	Folkestone Foord	E01024501	13		725
	Folkestone Harbour	E01024505	14		800
	Folkestone Harvey West	E01024509	15		457
	Folkestone Sandgate	E01024520	16		537
		E01024521	17		618
	Lydd	E01024534	18		693
2	Eythorne and Shepherdswell	E01024205	19		691
	Lydden and Temple Ewell	E01024210	20		573
	Maxton, Elms Vale and Priory	E01024214	21		679
	Maxton, Elms Vale and Priory	E01024215	22		670
	Mill Hill	E01024222	23		680
	Mill Hill	E01024223	24		642
	North Deal	E01024229	25		627
	Whitfield	E01024256	26		622
	Folkestone Harvey Central	E01024507	27		788
	Hythe Central	E01024522	28		530
	Lydd	E01024532	29		654
	North Downs West	E01024547	30		558
Total deaths and population in highest two deciles				69	19528
Total deaths and population in other deciles				52	64981
Total deaths and population in NHS South Kent Coast CCG				121	84509

Source: PHMF, ONS, KMPHO

Note: Errors due to rounding may have occurred

Summary data*	Population	Standardised rate**	Target setting
Total deaths in highest two deciles	69	19528	Cut mortality in two highest deciles to the Kent and Medway rate of 34.8 deaths per 100,000 - resulting in 48 deaths postponed in a three year period
Total deaths in other deciles	52	64981	
Total deaths in NHS South Kent Coast CCG	121	84509	

* - 2010-2012 combined deaths

** - per 100,000 population, annual average for period

Table South Kent Coast 3

Mortality in females for all cancer under 75, 2010-12, showing LSOAs in the highest two deciles

Decile	Place of residence			Deaths	Population
	Electoral ward	LSOA	Map index		
1	Buckland	E01024194	1	Data suppressed	691
		E01024196	2		685
	Eythorne and Shepherdswell	E01024203	3		654
	Lydden and Temple Ewell	E01024210	4		592
	Middle Deal and Sholden	E01024218	5		597
	St Radigunds	E01024240	6		764
	Town and Pier	E01024249	7		855
	Folkestone Foord	E01024499	8		687
	Folkestone Harvey Central	E01024506	9		585
	Folkestone Harvey West	E01024509	10		448
	Hythe East	E01024526	11		631
2	Aylesham	E01024190	12		681
	Buckland	E01024195	13		652
	Castle	E01024199	14		798
	Eastry	E01024201	15		711
	North Deal	E01024229	16		592
	St Margaret's-at-Cliffe	E01024238	17		940
	St Radigunds	E01024239	18		664
	Walmer	E01024251	19		691
	Whitfield	E01024256	20		612
	Folkestone Cheriton	E01024495	21		820
	Folkestone Harbour	E01024504	22		808
		E01024505	23		812
	Hythe Central	E01024522	24		580
	Lydd	E01024534	25		686
	North Downs West	E01024546	26		715
Total deaths and population in highest two deciles				124	17951
Total deaths and population in other deciles				245	68916
Total deaths and population in NHS South Kent Coast CCG				369	86867

Source: PHMF, ONS, KMPHO

Note: Errors due to rounding may have occurred

Summary data*	Population	Standardised rate	Target setting
Total deaths in highest two deciles	124	17951	184.7
Total deaths in other deciles	245	68916	78.7
Total deaths in NHS South Kent Coast CCG	369	86867	98.9

Cut mortality in two highest deciles to the Kent and Medway rate of 34.8 deaths per 100,000
- resulting in 60 deaths postponed in a three year period

* - 2010-2012 combined deaths

** - per 100,000 population, annual average for period

Table South Kent Coast 3a

Mortality in males for all cancer under 75, 2010-12, showing LSOAs in the highest two deciles

Decile	Place of residence			Deaths	Population
	Electoral ward	LSOA	Map index		
1	Middle Deal and Sholden	E01024218	1	Data suppressed	521
	Tower Hamlets	E01024247	2		771
	Dymchurch and St Mary's Bay	E01024486	3		870
	Folkestone Cheriton	E01024492	4		646
	Folkestone East	E01024493	5		614
	Folkestone East	E01024496	6		671
	Folkestone Harbour	E01024503	7		751
	Folkestone Harbour	E01024505	8		800
	Folkestone Harvey Central	E01024508	9		701
	Folkestone Park	E01024518	10		763
	Lydd	E01024534	11		693
	North Downs West	E01024547	12		558
2	Buckland	E01024193	13	600	
	Lydden and Temple Ewell	E01024211	14	420	
	Maxton, Elms Vale and Priory	E01024213	15	630	
	North Deal	E01024230	16	539	
	Ringwould	E01024232	17	820	
	Walmer	E01024250	18	681	
	Whitfield	E01024255	19	638	
	Dymchurch and St Mary's Bay	E01024489	20	731	
	Folkestone Cheriton	E01024494	21	701	
	Folkestone East	E01024498	22	740	
	Folkestone Sandgate	E01024519	23	1183	
	Hythe Central	E01024525	24	575	
	Lydd	E01024533	25	483	
	New Romney Town	E01024540	26	665	
	North Downs East	E01024543	27	1421	
Total deaths and population in highest two deciles				184	19186
Total deaths and population in other deciles				275	65322
Total deaths and population in NHS South Kent Coast CCG				459	84508

Source: PHMF, ONS, KMPHO

Note: Errors due to rounding may have occurred

Summary data*	Population	Standardised rate**	Target setting
Total deaths in highest two deciles	184	19186	223.20
Total deaths in other deciles	275	65322	37.20
Total deaths in NHS South Kent Coast CCG	459	84508	125.60

Cut mortality in two highest deciles to the Kent and Medway rate of 34.8 deaths per 100,000
- resulting in 87 deaths postponed in a three year period

* - 2010-2012 combined deaths

** - per 100,000 population, annual average for period

Table Swale 1

Mortality in females for all circulatory disease under 75, 2010-12, showing LSOAs in the highest two deciles

Decile	Place of residence			Deaths	Population
	Electoral ward	LSOA	Map index		
1	Chalkwell	E01024559	1	Data suppressed	565
	Grove	E01024567	2		1332
	Hartlip, Newington and Upchurch	E01024571	3		713
	Kemsley	E01024577	4		655
	Minster Cliffs	E01024588	5		649
	Murston	E01024590	6		717
	Queenborough and Halfway	E01024595	7		677
		E01024597	8		741
		E01024598	9		687
		E01024599	10		910
	Sheerness East	E01024609	11		575
		E01024610	11		728
Sheerness West	E01024614	12	727		
2	Sheerness East	E01024611	13		702
	Sheppey Central	E01024617	14		1424
		E01024619	15		665
		E01024621	16		564
	West Downs	E01024628	17	686	
Total deaths and population in highest two deciles				51	13717
Total deaths and population in other deciles				30	34273
Total deaths and population in NHS Swale CCG				81	47990

Source: PHMF, ONS, KMPHO

Note: Errors due to rounding may have occurred

Summary data*	Population	Standardised rate	Target setting
Total deaths in highest two deciles	51	13717	100.2
Total deaths in other deciles	30	34273	22.1
Total deaths in NHS Swale CCG	81	47990	45.2
- resulting in 35 deaths postponed in a three year period			

* - 2010-2012 combined deaths

** - per 100,000 population, annual average for period

Table Swale 1 a

Mortality in males for all circulatory disease under 75, 2010-12, showing LSOAs in the highest two deciles

Decile	Place of residence		Map index	Deaths	Population
	Electoral ward	LSOA			
1	Grove	E01024567	1	Data suppressed	1291
	Iwade and Lower Halstow	E01024574	2		1460
	Milton Regis	E01024584	3		741
	Sheerness East	E01024610	4		718
	Sheppey Central	E01024620	5		572
		E01024621	6		502
	Teynham and Lynsted	E01024624	7		718
2	Chalkwell	E01024559	8		548
		E01024561	9		573
		E01024562	10		668
	Grove	E01024569	11		734
	Kemsley	E01024577	12		691
		E01024578	13		786
	Leysdown and Warden	E01024580	14		782
	Milton Regis	E01024582	15		690
	Minster Cliffs	E01024585	16		676
	Murston	E01024590	17		799
	Roman	E01024600	18		660
	Sheerness West	E01024614	19		705
Total deaths and population in highest two deciles				84	14314
Total deaths and population in other deciles				75	34864
Total deaths and population in NHS Swale CCG				159	49178

Source: PHMF, ONS, KMPHO

Note: Errors due to rounding may have occurred

Summary data*	Population	Standardised rate**	Target setting
Total deaths in highest two deciles	84	14314	171.1
Total deaths in other deciles	75	34864	57.9
Total deaths in NHS Swale CCG	159	49178	89.5
			Target setting Cut mortality in two highest deciles to the Kent and Medway rate of 34.8 deaths per 100,000 - resulting in 43 deaths postponed in a three year period

* - 2010-2012 combined deaths

** - per 100,000 population, annual average for period

Table Swale 2

Mortality in females for all respiratory disease under 75, 2010-12, showing LSOAs in the highest two deciles

Decile	Place of residence		Map index	Deaths	Population
	Electoral ward	LSOA			
1	Kemsley	E01024578	1	Data suppressed	814
	Sheerness West	E01024613	2		667
		E01024614	3		727
	Sheppey Central	E01024618	4		795
	Teynham and Lynsted	E01024624	5		712
2	Borden	E01024554	6		1134
	Chalkwell	E01024560	7		594
		E01024562	8		670
	Hartlip, Newington and Upchurch	E01024570	9		857
	Kemsley	E01024576	10		818
	Leysdown and Warden	E01024580	11		752
	Murston	E01024592	12		571
	Sheerness West	E01024615	13		669
Total deaths and population in highest two deciles				22	9780
Total deaths and population in other deciles				15	38211
Total deaths and population in NHS Swale CCG				37	47991

Source: PHMF, ONS, KMPHO

Note: Errors due to rounding may have occurred

Summary data*	Population	Standardised rate	Target setting
Total deaths in highest two deciles	22	9780	57.5
Total deaths in other deciles	15	38211	9.8
Total deaths in NHS Swale CCG	37	47991	19.8

Cut mortality in two highest deciles to the Kent and Medway rate of 34.8 deaths per 100,000
- resulting in 15 deaths postponed in a three year period

* - 2010-2012 combined deaths

** - per 100,000 population, annual average for period

Table Swale 2a

Mortality in males for all respiratory disease under 75, 2010-12, showing LSOAs in the highest two deciles

Decile	Place of residence		Map index	Deaths	Population
	Electoral ward	LSOA			
1	Chalkwell	E01024559	1	Data suppressed	548
	Kemsley	E01024576	2		827
	Milton Regis	E01024584	3		741
	Murston	E01024590	4		799
	Sheerness East	E01024609	5		604
		E01024612	6		736
	Sheerness West	E01024614	7		705
	Sheppey Central	E01024621	8		502
2	Chalkwell	E01024560	9		559
		E01024561	10		573
	Hartlip, Newington and Upchurch	E01024572	11		627
	Leysdown and Warden	E01024580	12		782
	Roman	E01024601	13		751
	Sheppey Central	E01024619	14		650
Total deaths and population in highest two deciles				28	9404
Total deaths and population in other deciles				26	39772
Total deaths and population in NHS Swale CCG				54	52464

Source: PHMF, ONS, KMPHO

Note: Errors due to rounding may have occurred

Summary data*	Population	Standardised rate**	Target setting
Total deaths in highest two deciles	28	9404	89.2
Total deaths in other deciles	26	39772	16.9
Total deaths in NHS Swale CCG	54	52464	30.2

Cut mortality in two highest deciles to the Kent and Medway rate of 34.8 deaths per 100,000
- resulting in 19 deaths postponed in a three year period

* - 2010-2012 combined deaths

** - per 100,000 population, annual average for period

Table Swale 3

Mortality in females for all cancer under 75, 2010-12, showing LSOAs in the highest two deciles

Decile	Place of residence			Deaths	Population
	Electoral ward	LSOA	Map index		
1	Kemsley	E01024577	1	Data suppressed	655
		E01024579	2		1267
	Minster Cliffs	E01024585	3		653
		E01024588	4		649
	Queenborough and Halfway	E01024596	5		727
		E01024598	6		687
	Sheerness East	E01024609	7		575
		E01024610	8		728
	Sheppey Central	E01024619	9		665
2	Borden	E01024554	10		1134
	Grove	E01024567	11		1332
	Milton Regis	E01024584	12		812
	Minster Cliffs	E01024589	13		670
	Sheerness West	E01024613	14		667
		E01024616	15		741
	Sheppey Central	E01024620	16		577
		E01024621	17		564
	Teynham and Lynsted	E01024624	18		712
Woodstock	E01024630	19	652		
Total deaths and population in highest two deciles				96	14467
Total deaths and population in other deciles				104	33523
Total deaths and population in NHS Swale CCG				200	47990

Source: PHMF, ONS, KMPHO

Note: Errors due to rounding may have occurred

Summary data*	Population	Standardised rate	Target setting
Total deaths in highest two deciles	96	14467	179.2
Total deaths in other deciles	104	33523	81.8
Total deaths in NHS Swale CCG	200	47990	110.4

Cut mortality in two highest deciles to the Kent and Medway rate of 34.8 deaths per 100,000
- resulting in 45 deaths postponed in a three year period

* - 2010-2012 combined deaths

** - per 100,000 population, annual average for period

Table Swale 3a

Mortality in males for all cancer under 75, 2010-12, showing LSOAs in the highest two deciles

Decile	Place of residence			Deaths	Population
	Electoral ward	LSOA	Map index		
1	Chalkwell	E01024560	1	Data suppressed	559
		E01024581	2		704
	Milton Regis	E01024582	3		690
	Murston	E01024593	4		669
	Queenborough and Halfway	E01024595	5		666
	Roman	E01024600	6		660
	Sheerness East	E01024611	7		785
	Sheerness West	E01024614	8		705
	Sheppey Central	E01024621	9		502
2	Hartlip, Newington and Upchurch	E01024572	10		627
	Iwade and Lower Halstow	E01024575	11		562
	Leysdown and Warden	E01024580	12		782
	Milton Regis	E01024583	13		744
		E01024584	14		741
	Queenborough and Halfway	E01024597	15		656
	Roman	E01024599	16		911
	St Michaels	E01024608	17		697
	Sheerness West	E01024613	18		674
E01024615		19	661		
Total deaths and population in highest two deciles				106	12995
Total deaths and population in other deciles				139	36181
Total deaths and population in NHS Swale CCG				245	49176

Source: PHMF, ONS, KMPHO

Note: Errors due to rounding may have occurred

Summary data*	Population	Standardised rate**	Target setting
Total deaths in highest two deciles	106	12995	229.40
Total deaths in other deciles	139	36181	102.70
Total deaths in NHS Swale CCG	245	49176	134.80

Cut mortality in two highest deciles to the Kent and Medway rate of 34.8 deaths per 100,000
- resulting in 52 deaths postponed in a three year period

* - 2010-2012 combined deaths

** - per 100,000 population, annual average for period

Table West Kent 1

Mortality in females for all circulatory disease under 75, 2010-12, showing LSOAs in the highest two deciles

Decile	Place of residence			Deaths	Population
	Electoral ward	LSOA	Map index		
1	Boughton Monchelsea and Chart Sutton	E01024332	1	Data suppressed	531
	Coxheath and Hunton	E01024342	2		716
	East	E01024352	3		757
	Fant	E01024356	4		718
	High Street	E01024370	5		853
	High Street	E01024372	6		860
	Park Wood	E01024389	7		952
	Shepway South	E01024398	8		756
	Shepway South	E01024399	9		535
	Aylesford	E01024717	10		736
	Higham	E01024749	11		690
	Snodland East	E01024771	12		830
	Snodland West	E01024773	13		800
	Paddock Wood East	E01024812	14		740
	Rusthall	E01024831	15		676
	St James'	E01024832	16		747
	Southborough and High Brooms	E01024846	17		721
2	Allington	E01024321	18		785
	East	E01024351	19		698
	Fant	E01024358	20		808
	Heath	E01024369	21		676
	High Street	E01024374	22		729
	Marden and Yalding	E01024381	23		666
	Shepway North	E01024393	24		658
	Shepway North	E01024394	25		636
	South	E01024405	26		879
	Sutton Valence and Langley	E01024410	27		677
	Brasted, Chevening and Sundridge	E01024417	28		692
	Brasted, Chevening and Sundridge	E01024418	29		605
	Leigh and Chiddingstone Causeway	E01024451	30		1106
	Otford and Shoreham	E01024452	31		593
	Sevenoaks Town and St John's	E01024469	32		702
	Westerham and Crockham Hill	E01024485	33		815
	Larkfield South	E01024763	34		647
	Medway	E01024766	35		825
	Snodland East	E01024769	36		684
	Brenchley and Horsmonden	E01024794	37		735
	Broadwater	E01024795	38		685
	Goudhurst and Lamberhurst	E01024805	39		745
	Park	E01024822	40		810
	Park	E01024824	41		742
	Rusthall	E01024830	42		738
	St John's	E01024835	43		925
	Southborough North	E01024849	44		713
Total deaths and population in highest two deciles				102	32592
Total deaths and population in other deciles				117	170641
Total deaths and population in NHS West Kent CCG				219	203233

Source: PHMF, ONS, KMPHO

Note: Errors due to rounding may have occurred

Summary data*	Population	Standardised rate	Target setting
Total deaths in highest two deciles	102	32592	85.0
Total deaths in other deciles	117	170641	16.8
Total deaths in NHS West Kent CCG	219	203233	27.4

Cut mortality in two highest deciles to the Kent and Medway rate of 34.8 deaths per 100,000
- resulting in 60 deaths postponed in a three year period

* - 2010-2012 combined deaths

** - per 100,000 population, annual average for period

Table West Kent 1a

Mortality in males for all circulatory disease under 75, 2010-12, showing LSOAs in the highest two deciles

Decile	Place of residence			Deaths	Population
	Electoral ward	LSOA	Map index		
1	Boughton Monchelsea and Chart Sutton	E01024332	1	Data suppressed	529
	East	E01024352	2		794
	High Street	E01024370	3		995
	High Street	E01024372	4		919
	High Street	E01024374	5		692
	Marden and Yalding	E01024379	6		839
	North	E01024383	7		979
	North	E01024384	8		817
	Park Wood	E01024389	9		762
	Medway	E01024766	10		849
	Snodland East	E01024769	11		645
	Snodland East	E01024770	12		484
	Trench	E01024776	13		558
	Culverden	E01024801	14		1043
	Paddock Wood East	E01024813	15		680
	Park	E01024821	16		744
	Pembury	E01024827	17		694
2	Boxley	E01024334	18		486
	High Street	E01024339	19		946
	Coxheath and Hunton	E01024342	20		664
	Fant	E01024358	21		747
	Fant	E01024359	22		1186
	Shepway North	E01024392	23		746
	Sutton Valence and Langley	E01024410	24		619
	Seal and Weald	E01024457	25		524
	Judd	E01024757	26		746
	Snodland West	E01024774	27		1060
	Vauxhall	E01024780	28		782
	Benenden and Cranbrook	E01024790	29		577
	Broadwater	E01024795	30		616
	Paddock Wood West	E01024816	31		604
	Pantiles and St Mark's	E01024819	32		686
	Park	E01024822	33		817
	Sherwood	E01024841	34		875
	Southborough and High Brooms	E01024843	35		704
Total deaths and population in highest two deciles				148	26408
Total deaths and population in other deciles				366	174987
Total deaths and population in NHS Medway CCG				514	201395

Source: PHMF, ONS, KMPHO

Note: Errors due to rounding may have occurred

Summary data*	Population	Standardised rate**	Target setting
Total deaths in highest two deciles	148	26408	186.6
Total deaths in other deciles	366	174987	54.4
Total deaths in NHS Medway CCG	514	201395	68.7

- resulting in 82 deaths postponed in a three year period

* - 2010-2012 combined deaths

** - per 100,000 population, annual average for period

Table West Kent 2

Mortality in females for all respiratory disease under 75, 2010-12, showing LSOAs in the highest two deciles

Decile	Place of residence			Deaths	Population
	Electoral ward	LSOA	Map index		
1	Allington	E01024322	1	Data suppressed	516
		E01024323	2		614
	High Street	E01024339	3		739
	Detling and Thurnham	E01024348	4		613
	East	E01024352	5		757
	Fant	E01024360	6		739
	High Street	E01024374	7		729
	North	E01024384	8		825
	Park Wood	E01024388	9		1173
		E01024389	10		952
	East Peckham and Golden Green	E01024743	11		819
	Hildenborough	E01024753	12		715
	Judd	E01024758	13		734
	Snodland East	E01024770	14		469
	Trench	E01024777	15		542
	Broadwater	E01024795	16		685
	Capel	E01024798	17		1074
	Sherwood	E01024842	18		715
	Southborough and High Brooms	E01024844	19		749
2	Bearsted	E01024328	20	731	
	Harrietsham and Lenham	E01024362	21	817	
	Shepway North	E01024391	22	641	
	Shepway South	E01024398	23	756	
	Dunton Green and Riverhead	E01024423	24	835	
		E01024425	25	679	
	Edenbridge North and East	E01024428	26	628	
		Judd	E01024757	27	745
	Trench	E01024775	28	735	
	Wrotham	E01024786	29	853	
	Paddock Wood West	E01024815	30	672	
	Rusthall	E01024831	31	676	
	St John's	E01024835	32	925	
	Southborough and High Brooms	E01024843	33	677	
		E01024845	34	593	
		E01024849	35	713	
Total deaths and population in highest two deciles				59	25835
Total deaths and population in other deciles				66	177381
Total deaths and population in NHS West Kent CCG				125	203216

2

Source: PHMF, ONS, KMPHO

Note: Errors due to rounding may have occurred

Summary data*	Population	Standardised rate	Target setting
Total deaths in highest two deciles	59	25835	64.7
Total deaths in other deciles	66	177381	8.8
Total deaths in NHS West Kent CCG	125	203216	15.1

- resulting in 42 deaths postponed in a three year period

* - 2010-2012 combined deaths

** - per 100,000 population, annual average for period

Table West Kent 2a

Mortality in males for all respiratory disease under 75, 2010-12, showing LSOAs in the highest two deciles

Decile	Place of residence			Deaths	Population
	Electoral ward	LSOA	Map index		
1	East	E01024355	1	Data suppressed	928
	High Street	E01024370	2		995
	Shepway North	E01024395	3		654
	Shepway South	E01024400	4		525
	South	E01024403	5		768
	Aylesford	E01024717	6		666
	Blue Bell Hill and Walderslade	E01024722	7		643
	Ditton	E01024735	8		726
	Hildenborough	E01024753	9		672
	Snodland East	E01024769	10		645
		E01024771	11		825
	Trench	E01024777	12		526
	Vauxhall	E01024779	13		772
	West Malling and Leybourne	E01024783	14		629
	Broadwater	E01024797	15		644
	Park	E01024821	16		744
	Rusthall	E01024831	17		659
	St James'	E01024833	18		902
2	Bearsted	E01024330	19	729	
	Fant	E01024357	20	782	
		E01024358	21	747	
	High Street	E01024372	22	919	
	Park Wood	E01024388	23	1157	
		E01024389	24	762	
	Shepway South	E01024397	25	622	
	South	E01024405	26	791	
	Staplehurst	E01024407	27	680	
	Sutton Valence and Langley	E01024411	28	543	
	Brasted, Chevening and Sundridge	E01024417	29	699	
	Halstead, Knockholt and Badgers Mount	E01024439	30	760	
	Westerham and Crockham Hill	E01024485	31	754	
	Cage Green	E01024731	32	475	
	Castle	E01024734	33	691	
	East Malling	E01024741	34	664	
	Snodland East	E01024770	35	484	
	Trench	E01024776	36	558	
	Vauxhall	E01024780	37	782	
	Broadwater	E01024796	38	626	
Goudhurst and Lamberhurst	E01024804	39	686		
Hawkhurst and Sandhurst	E01024810	40	747		
Park	E01024823	41	813		
Pembury	E01024827	42	694		
	E01024828	43	708		
Southborough and High Brooms	E01024843	44	704		
Speldhurst and Bidborough	E01024851	45	724		
Total deaths and population in highest two deciles				91	32224
Total deaths and population in other deciles				87	169170
Total deaths and population in NHS West Kent CCG				178	201394

Source: PHMF, ONS, KMPHO

Note: Errors due to rounding may have occurred

Summary data*	Population	Standardised rate**	Target setting
Total deaths in highest two deciles	91	32224	80.4
Total deaths in other deciles	87	169170	13.4
Total deaths in NHS West Kent CCG	178	201394	23.4

- resulting in 60 deaths postponed in a three year period

* - 2010-2012 combined deaths

** - per 100,000 population, annual average for period

Table West Kent 3

Mortality in females for all cancer under 75, 2010-12, showing LSOAs in the highest two deciles

Decile	Place of residence			Deaths	Population
	Electoral ward	LSOA	Map index		
1	Bearsted	E01024329	1	Data suppressed	722
	Fant	E01024356	2		718
	Harrietsham and Lenham	E01024363	3		918
	High Street	E01024373	4		765
	South	E01024401	5		625
	Sutton Valence and Langley	E01024411	6		560
	Dunton Green and Riverhead	E01024423	7		835
	Edenbridge South and West	E01024429	8		712
	Otford and Shoreham	E01024454	9		694
	Sevenoaks Northern	E01024466	10		636
	East Malling	E01024742	11		839
	Larkfield South	E01024764	12		562
	Snodland West	E01024773	13		800
	Vauxhall	E01024778	14		781
		E01024780	15		843
	Benenden and Cranbrook	E01024790	16		536
	Paddock Wood West	E01024816	17		565
	Sherwood	E01024840	18		893
	Boxley	E01024335	19		731
	Boxley	E01024337	20		720
	Marden and Yalding	E01024377	21		740
		E01024379	22		796
	Shepway South	E01024398	23		756
	Dunton Green and Riverhead	E01024424	24		656
	Blue Bell Hill and Walderslade	E01024722	25		683
	Ditton	E01024737	26		1041
	Hildenborough	E01024753	27		715
	Medway	E01024767	28		709
	Snodland West	E01024774	29		1092
	Trench	E01024776	30		638
	Goudhurst and Lamberhurst	E01024804	31		745
	Southborough and High Brooms	E01024843	32		677
		E01024847	33		738
Total deaths and population in highest two deciles				160	24441
Total deaths and population in other deciles				501	178772
Total deaths and population in NHS West Kent CCG				661	203213

Source: PHMF, ONS, KMPHO

Note: Errors due to rounding may have occurred

Summary data*	Population	Standardised rate	Target setting
Total deaths in highest two deciles	160	24441	192.9
Total deaths in other deciles	501	178772	71.5
Total deaths in NHS West Kent CCG	661	203213	84.8

- resulting in 81 deaths postponed in a three year period

* - 2010-2012 combined deaths

** -per 100,000 population, annual average for period

Table West Kent 3 a

Mortality in males for all cancer under 75, 2010-12, showing LSOAs in the highest two deciles

Place of residence					
Decile	Electoral ward	LSOA	Map index	Deaths	Population
1	Fant	E01024357	1	Data suppressed	782
	Harrietsham and Lenham	E01024361	2		772
	High Street	E01024370	3		995
	Park Wood	E01024388	4		1157
	Shepway North	E01024391	5		665
	Shepway North	E01024395	6		654
	Staplehurst	E01024406	7		717
	Sevenoaks Eastern	E01024460	8		807
	Aylesford	E01024717	9		666
	Castle	E01024733	10		728
	Snodland West	E01024774	11		1060
	Trench	E01024777	12		526
	Paddock Wood West	E01024816	13		604
	Park	E01024824	14		713
	St James'	E01024832	15		736
		E01024833	16		902
		E01024834	17		951
	Southborough and High Brooms	E01024843	18		704
		E01024847	19		687
2	Bridge	E01024340	20		969
	East	E01024352	21		794
		E01024355	22		928
	Fant	E01024358	23		747
	High Street	E01024374	24		692
	Shepway South	E01024397	25		622
	South	E01024401	26		636
	Staplehurst	E01024407	27		680
	Edenbridge South and West	E01024428	28		572
	Halstead, Knockholt and Badgers Mount	E01024439	29		760
	Aylesford	E01024719	30		974
	Ditton	E01024737	31		983
	East Malling	E01024742	32		792
	Medway	E01024767	33		659
		E01024768	34		710
	Vauxhall	E01024779	35		772
	West Malling and Leybourne	E01024785	36		664
	Brenchley and Horsmonden	E01024794	37		741
	Culverden	E01024800	38		685
	Hawkhurst and Sandhurst	E01024807	39		709
		E01024810	40		747
	Pembury	E01024826	41		656
St John's	E01024835	42	926		
Total deaths and population in highest two deciles				215	32244
Total deaths and population in other deciles				591	169148
Total deaths and population in NHS West Kent CCG				806	201392

Source: PHMF, ONS, KMPHO

Note: Errors due to rounding may have occurred

Summary data*	Population	Standardised rate**	Target setting
Total deaths in highest two deciles	215	32244	220.1
Total deaths in other deciles	591	169148	90.0
Total deaths in NHS West Kent CCG	806	201392	107.7

- resulting in 100 deaths postponed in a three year period

* - 2010-2012 combined deaths

** - per 100,000 population, annual average for period

Table 1 Thanet

Mortality in females for all circulatory disease under 75, 2010-12, showing LSOAs in the highest two deciles

Decile	Place of residence		Map index	Deaths	Population
	Electoral ward	LSOA			
1	Bradstowe	E01024643	1	Data suppressed	532
	Central Harbour	E01024646	2		770
	Dane Valley	E01024663	3		821
	Garlinge	E01024672	4		692
	Margate Central	E01024676	5		659
	Nethercourt	E01024679	6		513
	Newington	E01024683	7		856
	Northwood	E01024687	8		723
	St Peters	E01024693	9		658
	Thanet Villages	E01024704	10		758
	Westgate-on-Sea	E01024713	11		737
2	Beacon Road	E01024633	12		739
	Birchington South	E01024641	13		673
	Central Harbour	E01024645	14		730
	Central Harbour	E01024648	15		687
	Central Harbour	E01024649	16		785
	Dane Valley	E01024664	17		744
	Eastcliff	E01024670	18		728
	Salmestone	E01024695	19		611
	Westbrook	E01024712	20		728
Total deaths and population in highest two deciles				56	14144
Total deaths and population in other deciles				50	46133
Total deaths and population in NHS Thanet CCG				106	60277

Source: PHMF, ONS, KMPHO

Note: Errors due to rounding may have occurred

Summary data*	Population	Standardised rate	Target setting
Total deaths in highest two deciles	56	14144	108.0
Total deaths in other deciles	50	46133	22.4
Total deaths in NHS Thanet CCG	106	60277	40.9

Cut mortality in two highest deciles to the Kent and Medway rate of 34.8 deaths per 100,000
- resulting in 38 deaths postponed in a three year period

* - 2010-2012 combined deaths

** - per 100,000 population, annual average for period

Table 1 a Thanet

Mortality in males for all circulatory disease under 75, 2010-12, showing LSOAs in the highest two deciles

Decile	Place of residence			Deaths	Population
	Electoral ward	LSOA	Map index		
1	Beacon Road	E01024634	1	Data suppressed	607
	Central Harbour	E01024646	2		731
	Cliftonville West	E01024657	3		854
		E01024658	4		773
		E01024659	5		681
		E01024660	6		706
	Dane Valley	E01024664	7		772
		E01024666	8		776
	Margate Central	E01024676	9		699
		E01024677	10		886
		E01024678	11		764
	Newington	E01024682	12		719
		E01024683	13		779
	Salmestone	E01024694	14		703
	Thanet Villages	E01024696	15		564
		E01024702	16		620
2	Central Harbour	E01024648	17	700	
		E01024649	18	625	
	Cliffsend and Pegwell	E01024651	19	657	
	Eastcliff	E01024667	20	775	
		E01024668	21	618	
	St Peters	E01024690	22	625	
		E01024691	23	571	
	Westbrook	E01024710	24	602	
		E01024711	25	641	
		E01024712	26	673	
Total deaths and population in highest two deciles				135	18121
Total deaths and population in other deciles				123	39584
Total deaths and population in NHS Thanet CCG				258	57705

Source: PHMF, ONS, KMPHO

Note: Errors due to rounding may have occurred

Summary data*	Population	Standardised rate**	Target setting
Total deaths in highest two deciles	135	18121	215.0
Total deaths in other deciles	123	39584	68.1
Total deaths in NHS Thanet CCG	258	57705	110.8

- resulting in 82 deaths postponed in a three year period

*- 2010-2012 combined deaths

** - per 100,000 population, annual average for period

Table 2 Thanet

Mortality in females for all respiratory disease under 75, 2010-12, showing LSOAs in the highest two deciles

Decile	Place of residence			Deaths	Population
	Electoral ward	LSOA	Map index		
1	Birchington South	E01024640	1	Data suppressed	663
	Cliftonville West	E01024657	2		851
	Dane Valley	E01024665	3		775
		E01024666	4		884
		E01024669	5		814
	Eastcliff	E01024670	6		728
		E01024671	7		685
	Garlinge	E01024672	8		692
	Margate Central	E01024676	9		659
	Nethercourt	E01024679	10		513
	Birchington South	E01024641	11		673
2	Bradstowe	E01024642	12	656	
		E01024643	13	532	
	Cliftonville West	E01024661	14	729	
	Dane Valley	E01024663	15	821	
		E01024664	16	744	
	Margate Central	E01024677	17	817	
	Newington	E01024682	18	822	
	St Peters	E01024690	19	693	
	Thanet Villages	E01024703	20	802	
	Westbrook	E01024710	21	501	
	Westgate-on-Sea	E01024714	22	557	
Total deaths and population in highest two deciles				43	15611
Total deaths and population in other deciles				24	44667
Total deaths and population in NHS Thanet CCG				67	60278

Source: PHMF, ONS, KMPHO

Note: Errors due to rounding may have occurred

Summary data*	Population	Standardised rate	Target setting
Total deaths in highest two deciles	43	15611	68.8
Total deaths in other deciles	24	44667	10.6
Total deaths in NHS Thanet CCG	67	60278	24.5

Cut mortality in two highest deciles to the Kent and Medway rate of 34.8 deaths per 100,000
- resulting in 31 deaths postponed in a three year period

* - 2010-2012 combined deaths

** - per 100,000 population, annual average for period

Table 2a Thanet

Mortality in males for all respiratory disease under 75, 2010-12, showing LSOAs in the highest two deciles

Decile	Place of residence		Map index	Deaths	Population
	Electoral ward	LSOA			
1	Cliftonville East	E01024654	1	Data suppressed	631
		E01024657	2		854
	Cliftonville West	E01024659	3		681
		E01024661	4		694
	Dane Valley	E01024664	5		772
	Margate Central	E01024676	6		699
		E01024677	7		886
	Nethercourt	E01024681	8		722
	Newington	E01024683	9		779
	Westbrook	E01024710	10		602
	Westgate-on-Sea	E01024713	11		660
		E01024715	12		715
2	Beacon Road	E01024633	13		685
		E01024634	14		607
	Birchington South	E01024639	15		639
		E01024641	16		604
	Central Harbour	E01024649	17		625
	Cliftonville West	E01024660	18		706
	Dane Valley	E01024666	19		776
	Eastcliff	E01024670	20		659
	Nethercourt	E01024680	21		697
	Northwood	E01024688	22		648
	St Peters	E01024690	23		625
	Salmestone	E01024695	24		614
		E01024696	25		564
	Viking	E01024709	26		620
	Westbrook	E01024711	27		641
	Westgate-on-Sea	E01024714	28		564
Total deaths and population in highest two deciles				62	18969
Total deaths and population in other deciles				30	38736
Total deaths and population in NHS Thanet CCG				92	57705

Source: PHMF, ONS, KMPHO

Note: Errors due to rounding may have occurred

Summary data*	Population	Standardised rate**	Target setting
Total deaths in highest two deciles	62	18969	82.0
Total deaths in other deciles	30	38736	16.6
Total deaths in NHS Thanet CCG	92	57705	36.4

- resulting in 41 deaths postponed in a three year period

* - 2010-2012 combined deaths

** - per 100,000 population, annual average for period

Table 3 Thanet

Mortality in females for all cancer under 75, 2010-12, showing LSOAs in the highest two deciles

Decile	Place of residence			Deaths	Population
	Electoral ward	LSQA	Map index		
1	Beacon Road	E01024633	1	Data suppressed	739
		E01024635	2		768
	Central Harbour	E01024646	3		770
		E01024648	4		687
	Dane Valley	E01024663	5		821
		E01024665	6		775
	Eastcliff	E01024670	7		728
		E01024671	8		685
	Margate Central	E01024676	9		659
		E01024678	10		780
	Salmestone	E01024696	11		560
2	Birchington North	E01024637	12		698
		E01024640	13		663
	Birchington South	E01024641	14		673
	Central Harbour	E01024649	15		785
	Garlinge	E01024672	16		692
	Newington	E01024683	17		856
	Northwood	E01024688	18		687
	St Peters	E01024692	19		788
	Sir Moses Montefiore	E01024700	20		889
	Westbrook	E01024710	21		501
Total deaths and population in highest two deciles				118	15204
Total deaths and population in other deciles				170	45075
Total deaths and population in NHS Thanet CCG				288	60279

Source: PHMF, ONS, KMPHO

Note: Errors due to rounding may have occurred

Summary data*	Population	Standardised rate	Target setting
Total deaths in highest two deciles	118	15204	Cut mortality in two highest deciles to the Kent and Medway rate of 34.8 deaths per 100,000 - resulting in 60 deaths postponed in a three year period
Total deaths in other deciles	170	45075	
Total deaths in NHS Thanet CCG	288	60279	

* - 2010-2012 combined deaths

** - per 100,000 population, annual average for period

Table 3a Thanet

Mortality in males for all cancer under 75, 2010-12, showing LSOAs in the highest two deciles

Decile	Place of residence			Deaths	Population
	Electoral ward	LSOA	Map index		
1	Central Harbour	E01024645	1	Data suppressed	715
	Cliffsend and Pegwell	E01024650	2		674
		E01024651	3		657
	Dane Valley	E01024663	4		751
		E01024667	5		775
	Eastcliff	E01024668	6		618
		E01024670	7		659
	Margate Central	E01024676	8		699
	Sir Moses Montefiore	E01024700	9		852
	Westbrook	E01024710	10		602
	Westgate-on-Sea	E01024713	11		660
		E01024714	12		564
2	Birchington South	E01024641	13		604
	Cliftonville West	E01024660	14		706
	Eastcliff	E01024669	15		740
	Sir Moses Montefiore	E01024699	16		869
	Westgate-on-Sea	E01024715	17		715
Total deaths and population in highest two deciles				107	11860
Total deaths and population in other deciles				197	45844
Total deaths and population in NHS Thanet CCG				304	57704

Source: PHMF, ONS, KMPHO

Note: Errors due to rounding may have occurred

Summary data*	Population	Standardised rate**	Target setting
Total deaths in highest two deciles	107	11860	247.2
Total deaths in other deciles	197	45844	100.7
Total deaths in NHS Thanet CCG	304	57704	127.8

- resulting in 56 deaths postponed in a three year period

* - 2010-2012 combined deaths

** - per 100,000 population, annual average for period

ⁱ Reduction in number of cancer related deaths should be interpreted with caution as improvements may take decades to become apparent